



The Oak Leaf

January 2012

Volume 40, Issue 1

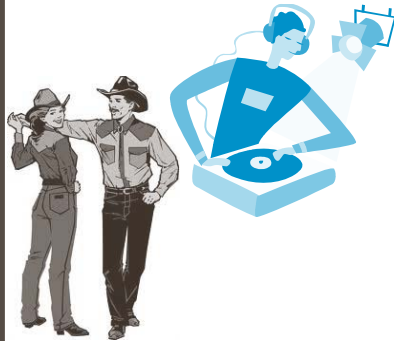
BABY IT'S COLD OUTSIDE

Coming to Olivedale is one way to beat the winter blues and join the fun. Take a dip in the warm therapeutic water and soothe those aching joints. Exercise and limber up those muscles so snow shoveling is a breeze. Play a game of billiards or ping-pong. Join a game of bridge, poker, hand & foot, pinochle or euchre. Learn tatting, quilting, woodcarving or basket making. Take a lesson in line dance or ballroom dance. Get educated in subjects that affect the seasoned adult population or just pull up a chair and grab a good book from the Olivedale library. Spend some time at one of the best senior centers. The coffee's on us!



Come Dance with Us

(Unless Otherwise Noted) **OPEN TO THE PUBLIC (MUST BE 18 YRS OR OLDER)—ADMISSION \$4**
NO Carry-In Refreshments—Refreshments Are Available for Purchase
Kitchen Opens 6:00p ~~~Dance 7:00p—10:00p



Saturday, January 28

Line, Round and Square Dance

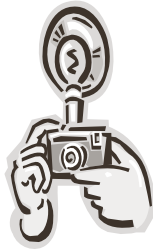
TNT Entertainment



COMMUNITY

Photographer Wanted

Olivedale is looking for a volunteer photographer to take pictures at different Olivedale events and dances. Members like to see pictures of what's been happening at Olivedale each month in the newsletter. The pictures taken will be shown on the website as well as the newsletter and bulletin board. If interested, please contact the office at 740-687-6655.



Tax Time

Once again AARP will provide tax assistance for low income, disabled and the elderly filing a simple 1040 form. This service has been provided free of charge with a request of a donation to Olivedale for providing the building space. Appointments will be accepted January 30. Please wait and call the office on or after that date to schedule an appointment between February 6 thru April 16.



Lancaster Parks News

Alley Park:

- Mon. 7:30p—Line Dance
- Tues. Tai Chi~ Advanced 6:30p, Beginner's 7:30p
- 1st & 3rd Wed. 7:00p- Pickin' in the Park



the **NEW** single family condo homes

Sanctuary

at Wesley Hills

Stop in or call (740) 681-2686
toll free 1-877-40 HILLS

1422 Epworth Forest Dr.
Lancaster, Ohio 43130

Monday-Friday 11:30am-4:00pm
Sat. & Sun. by appointment

OLIVEDALE SENIOR CENTER

Is a part of Lancaster Parks & Recreation
Mitch Overton, Superintendent Of Parks
Carla Young, Olivedale Park Manager

The elected Board of Directors represent the members of Olivedale. They welcome all comments from the membership. Please feel free to approach any of the listed Directors to express your concerns or write them down and place them in the Board suggestion box located inside the front entrance. If you are not sure how to get in touch with a board member, please ask at the office.

Olivedale Board of Directors

Meets every 2nd Wednesday at 1:00p.
Meetings open to all members.

Jim Martin, President
Ray Baskin, Vice President
Barb Ramsey, Secretary
Karen Sanner, Treasurer
Tom Corbin, Legal Advisor

Peg Clifford
Betty Coleman
June Hickie
Anne Hart Kiphen
Marleen McManus
Dr Chris Miller
Fritz Prosch
Larry Wentz

COMMUNICATION CORNER

March 6, 2012 Election

As most of you know, Olivedale is one of the great Lancaster City Parks with a large senior center facility and 16 acres. Are you also aware that the Lancaster City Parks renewal levy will be on the ballot in March 2012? It will not cost any more because it is just a renewal. This levy affects only those who have earned income, unlike the property tax levy for the County Historical Parks on the November 2011 ballot. It provides operating funds for the City Parks Department to continue maintenance of the 25 public parks including Olivedale's Wellness Center and the two public pools, Tiki and Miller. Also providing community park events like the



Maple Tapping Festival at Alley Park in March, Olivedale Art Show in May, Antique Tractor Show at Alley Park in August, Olivedale's 80+ Birthday Party along with Star Gazing and Frontier Spirit at Alley Park in September, Olivedale Annual Chicken Noodle Dinner and the Pumpkin Hike at Alley Park in October, the many educational programs at Alley and Olivedale and Santa and Friends at Alley Park in December. Lancaster has one of the better Parks Systems in the country. It's gratifying to work for a City Department operating solely to promote health, education and recreation. Thank you for your continued support of The Lancaster City Parks!

EATING AT OLIVEDALE

2nd Tuesday Lunch

Why did the chicken cross the road? To get some dumplings! Join us **Tuesday, January 10 from 11:30a-12:30p** for chicken and dumplings, mashed potatoes, green beans and dessert. Your pre-paid \$5 is due no later than Friday, January 6.



Thursday Waffles

Chase away the January chill with a waffle breakfast! Join Chef Larry for waffles, sausage, coffee or tea, served **8:00a to 10:00a** all for **\$3**, served every **Thursday morning**.

How Many Pancakes Can You Eat?

Come see how many pancakes you can eat at Olivedale's pancake breakfast with all you can eat pancakes served with sausage, juice, coffee or tea. Extras are available for as little as 50¢ more. Breakfast is **Wednesday, January 18, 7:30a-11:00p** for **\$3.50**. If Santa left you a little extra cash, stop by Granny's Attic to see all the new items for sale.

Life just got easier.

Enjoy personal care assistance, social outings and activities, and much more.

Bring this ad in and receive a FREE MEAL when you tour.

Springs at Carroll

A Senior Living Community by Assisted Living Concepts, Inc.
3682 Dolson CT NW • Carroll, OH 43112
(740) 654-4529 www.alcco.com

Call (740) 654-4529 to schedule a tour.

Home Helpers is Taking Care of the Greatest Generation ... Yours.

You & your family deserve the best home care. From a few hours to 24/7 care, we're there when and where you need us!

- Personal Care
- Light Housekeeping
- Meal Preparation
- Transportation
- And Much More!

Locally owned and operated!

Call Today!!

Home Helpers
Making Life Easier

740-689-9410
www.homecarelancastreroh.com

Classes And More

Knitting Basket

The **Monday, January 9** basket will be a knitting basket. It will be 10" at the top, 9" deep and will have side handles. Your accent colors will be brown, navy or rose, selected by you at time of sign-up which will be no later than Friday, January 6. **\$25** is due on class day, **9:00a to finish**. Class size is limited.



Self Defense

The art of self defense will be taught every **Monday at 9:30a for 8 weeks beginning Monday, January 23**. Everybody, no matter what their size, strength or skill level has the exact same vulnerable spots on their body. Learn where these spots are and how you can use them to your advantage under self-defense required conditions. **\$26**, payable in advance at the office, will have you feeling safer at home and away.

Tai Chi ~ Beginners and Advanced

The ancient form of Tai Chi has become the most popular form of exercise on the planet! Starting out as a martial art, Tai Chi is now taught more often for its health benefits. Tai Chi accumulates energy and leaves you refreshed and relaxed when finished, unlike

most forms of exercise that dissipates your energy and makes you tired and hyper at the same time. The graceful, slow speed coupled with an emphasis on deep breathing and mental focus, creates balance, flexibility and calmness which relieves stress and allows for the integration of your mind and body. **\$26** for an 8 week course; **Mondays at 1:00p for advanced classes and 2:00p for beginners classes**. The 2012 session will begin **Monday, January 23**.

Ballroom Dancing

Ballroom dance classes are held every **Friday at 1:00p; \$5** per person per lesson, payable at the office before class. No partner required. The *Foxtrot*, a favorite of many, will start the 2012 year off. The foxtrot is a smooth progressive dance characterized by long, continuous flowing movements across the dance floor. The feeling you enjoy is one of elegance and sophistication. The dance is similar in its look to the waltz. At its inception, the foxtrot was originally danced to ragtime. Developed in the 1920's, the foxtrot reached its height of popularity in the 1930's, and is still a favorite of many dedicated dancers.



Enriching the lives of those we serve
with compassion, respect,
excellence and integrity.


STERLING HOUSE
BROOKDALE SENIOR LIVING

www.brookdaleliving.co
PH: 740-681-9903 Fax: 740-681-9344
241 Whittier Drive South
Lancaster, OH 43130

Is your New Year's resolution to live in your home
for as long as it is safe to do so?

We can help.




AlternaCare
Home Health Services, Inc.
740-653-2224
AlternaCareHomeHealth.com

Sunday	Monday	Tuesday	Wednesday	Thursday	Friday	Saturday
1	2	3	4	5	6	7
Reminder Last Name S - Z Membership Expires Today!	Olivedale Closed 	9:00a Blood Pressure and Hearing Chec 11:00a Adv Line Dance 12:30p Rambling Design 12:30p Dominoes 1:00p Bridge 1:00p Pinochle 5:00p Euchre	9:30a Clogging Prac. 10:45a Bible Study 1:00p Euchre 6:00p Happy Harps 7:30p Line Dance	8:00a - 10:00a Café Breakfast 9:00a Quilt Charms 10:00a Crafters 10:00a Woodcarvers 1:00p Pinochle 1:00p Bingo	Deadline for February Newsletter 11:00a Adv Line Dance 1:00p Poker 1:00p Ball Room 1:00p Hand & Foot	
8	9	10	11	12	13	14
	9:00a Basket Class 10:00a Tatting 11:00a Beg Line Dance 12:30p Artists Hour 1:00p Bridge 1:00p Cribbage 5:00p Hand &Foot	9:00a Blood Pressure 11:00a Radio Class 11:00a Adv Line Dance 11:30a - 12:30p 2nd Tuesday Lunch 12:30p Dominoes 1:00p Bridge 1:00p Pinochle 3:00p Coin Club 5:00p Euchre	9:00a Depart Jungle Jim's 9:30a Clogging Prac. 10:45a Bible Study 1:00p Euchre 6:00p Happy Harps 7:30p Line Dance	8:00a - 10:00a Café Breakfast 9:00a Quilt Charms 10:00a Crafters 1:00p Pinochle 1:00p Bingo	11:00a Line Dance 1:00p Poker 1:00p Ball Room 1:00p Hand & Foot	
15	16	17	18	19	20	21
	Olivedale Closed 	9:00a Blood Pressure 9:00a Depart Conn 11:00a Adv Line Dance 12:30p Dominoes 1:00p Bridge 1:00p Pinochle 5:00p Euchre	7:30a - 11:00a Pancake Breakfast 9:30a Clogging Prac. 10:45a Bible Study 1:00p Euchre 4:00p Drama Grp 6:00p Happy Harps 7:30p Line Dance	8:00a - 10:00a Café Breakfast 9:00a Quilt Charms 10:00a Crafters 10:00a Woodcarvers 1:00p Pinochle 1:00p Bingo	11:00a Line Dance 1:00p Poker 1:00p Ball Room 1:00p Hand & Foot	
22	23	24	25	26	27	28
	NL Folding 9:30a Self Defense 10:00a Tatting 10:15a Depart Pizza 11:00a Beg Line Dance 12:30p Artists Hour 1:00p Bridge 1:00p Cribbage 1:00p Tai Chi - Adv 2:00p Tai Chi - Beg. 5:00p Hand &Foot	9:00a Blood Pressure 11:00a Adv Line Dance 12:30p Dominoes 1:00p Bridge 1:00p Pinochle 5:00p Euchre	9:30a Clogging Prac. 10:45a Bible Study 1:00p Euchre 4:00p Drama Grp 6:00p Happy Harps 7:30p Line Dance	8:00a - 10:00a Café Breakfast 9:00a Quilt Charms 10:00a Crafters 1:00p Pinochle 1:00p Bingo	11:00a Line Dance 1:00p Poker 1:00p Ball Room 1:00p Hand & Foot	7:00p - 10:00p Dance Tonight TNT Entertainment
29	30	31				
	9:30a Self Defense 10:00a Tatting 11:00a Beg Line Dance 12:30p Artists Hour 1:00p Bridge 1:00p Cribbage 1:00p Tai Chi - Adv 2:00p Tai Chi - Beg. 5:00p Hand &Foot	9:00a Blood Pressure 10:30a Depart Container Gardens 11:00a Adv Line Dance 12:30p Dominoes 1:00p Bridge 1:00p Pinochle 5:00p Euchre				



Betty Boopster Tip:
Carry your cell phone turned on, even at home. If you fall, you can call for help!



Wellness Center

Pool Schedule Through March

**W
A
T
E
R

C
L
A
S
S
E
S**

	MONDAY	TUESDAY	WEDNESDAY	THURSDAY	FRIDAY
7:00	Open Pool	Open Pool	Open Pool	Open Pool	Open Pool
8:00	Aqua Challenge	Aqua Challenge	Aqua Challenge	Aqua Challenge	Aqua Challenge
9:00	Pump & Jump	Pump & Jump	Pump & Jump	Pump & Jump	Pump & Jump
10:00	Light Aerobics	Light Aerobics	Light Aerobics	Light Aerobics	Light Aerobics
11:00	<i>Arthritis Foundation</i>	<i>Arthritis Foundation</i>	<i>Arthritis Foundation</i>	<i>Arthritis Foundation</i>	<i>Arthritis Foundation</i>
12:00	Open Pool	Open Pool	Open Pool	Open Pool	Open Pool
1:00	Aqua Aerobics	Aqua Aerobics	Aqua Aerobics	Aqua Aerobics	Aqua Aerobics
2:00	Water Workout	Water Workout	Water Workout	Water Workout	Water Workout
3:00	Open Pool	Open Pool	Open Pool	Open Pool	Open Pool
4:00	Strength & Flexibility	Walk and Talk	Strength & Flexibility	Walk and Talk	Close at 4:30
5:00	Light Aerobics	Water Workout	Light Aerobics	Water Workout	XX
6:00	Open Pool	Open Pool	Open Pool	Open Pool	XX
7:00	<i>Arthritis Foundation</i>	<i>Arthritis Foundation</i>	<i>Arthritis Foundation</i>	<i>Arthritis Foundation</i>	XX

Exercise Classes

WELLNESS CENTER HOURS

Monday-Thursday 7:00a—8:00p
Friday 7:00a—4:30p

All class attendance in the Aerobic Room is limited to 20 participants.

Aerobics Interval— Mon, Wed, Fri
8:00a—9:00a

Lite Aerobics— Tues, Thurs
10:00a—11:00a

Pilates Fit— Mon, Wed, Fri
9:10a—10:00a

Strength & Balance— Tues, Thurs
9:00a—10:00a

Yoga Stretch— Fri
11:00a—12:00p
Tues, Thurs
6:00p—7:00p

Zumba / Chair Asst. Strength— Tue, Thurs
11:00a—12:00P

Zumba— Fri
10:15—11:00

Zumba Tues,
7:00-7:45P

Tone It Up— Thur
7:00-7:45P

Orientations-By Appointment Only

Happy New Year!

This is the time many of us make resolutions to better ourselves by adopting additional new and healthier habits. Here are a few helpful suggestions to help make your resolutions successful:

Choose to change one behavior at a time, for example,

- Try to increase your activity by five minutes three times each day:
 - Already walking 15 minutes at a time? Try 20 minutes each time.
 - Add an additional day of exercise to the week;
 - Try a different type of exercise once or twice a week:
 - already walking?
- Try an exercise bike, Nu Step, or Aquatics, walking in water.

- Change you diet one thing at a time:
Don't eat anything with ingredients that a three year old cannot pronounce.
Add more colorful fruits and vegetables to your day.
Avoid processed manufactured foods. Drink more water.

The possibilities are endless, moving one step at a time toward better health, just get yourself up and start!

***Note** The pool will be closed for maintenance January 2-6
Session Runs Jan 9—March 2**

Activities at Olivedale

Coin Club

The Coin Club will meet **Tuesday, January 10**. Members are asked to bring their collections of nickels: Liberty nickels (1883-1913), V nickels, Indian Head (1913-1938) or Buffalo nickels and Jefferson nickels (1938 to the present) for show, sell, buy or trade. Contact Steve at 740-654-8831 for further information on club membership and coin collecting.

Rambling Designers Garden Club

The Garden Club will meet **Tuesday, January 3 at 1:00p**. Esther Coyle will be presenting the program, demonstrating how to make a dried flower wreath. For further information, contact Phyllis, 740-687-5930 or Ann, 740-654-4739.



Olivedale Singles

Enjoy lunch with friends! Meet at:
Buffalo Wild Wings 11:30a, Friday January 6
Bob Evans 11:30a, Wednesday, January 11;
Olive Garden 11:30a, Friday, January 20;
Red Lobster 11:30a, Tuesday, January 24;
Dave Dolle's house, 578 Lynwood Lane, 12:00 noon Monday, January 30 for pot luck. Table service and fresh ground coffee will be provided. Bring your favorite dish to share!

Drama Group

The first meeting back after the holidays will be **Wednesday, January 18 at 4:00p**. The Drama club meets every Wednesday (beginning the 18th) and has new skits to begin work on. Anyone



interested in the dramatic arts is welcome to join! No experience necessary!

Red Hats

For the first meeting of 2012, the Red Hatters will meet at **12:00noon at IHOP for lunch**. Members are asked to bring their favorite card games and after lunch, they will spend a cold winter afternoon with a hot game of cards! Note* For those who have not paid their dues, please plan on doing so at this meeting. Also, let Bobbie know what Hostess plans you have for the new year. For questions, please contact Myrna Cook at 740-739-2094.



The Games People Play

Cabin fever beware! Olivedale has a way to cure that pent-up fever ~ we have games galore! Some games that challenge, some that require deep thought, some that are physical and others that cause laughter and bring lasting friendships! Here's Olivedale's cabin fever cures:
Train Dominoes; Tuesdays at 12:30p
Bingo; Thursdays at 1:00p
Ping Pong and Billiards; anytime between 7:00a-8:00p Monday through Thursday and 7:00a to 4:30p Fridays
Wii; whenever you want!
 Added to this is lots of various card games:
Euchre; Tuesdays at 5:00p and Wednesdays at 1:00p
Bridge; Tuesdays at 1:00p
Hand and Foot; Mondays at 5:00p and Fridays at 1:00p
Poker; Fridays at 1:00p



Call Today to Schedule Your Personal Tour!

The Inn at
Fairfield Village

A Senior Assisted Residence

(740) 689-9944

www.innatfairfieldvillage.com

24-Hour Nurse On-Site
Independently Owned /
Alzheimer's Care

6555 Busch Blvd.
Columbus, OH 43229
Phone: 614.433.0031
Fax: 614.433.0550

SENIOR INDEPENDENCE

www.seniorindependence.org www.icareglvr.org

OUR MISSION

To extend and enhance the independence and well being of older adults and build the capacity of family members, communities and organizations to care for them at home.

HOME HEALTH • HOSPICE • ADULT DAY SERVICES

Member Information

Welcome New Members!

In Memory of

Gene & Evelyn Azbell
James & June Baker
Patrick Balser
Paula Boetcher
Donna Bontrager
Jerry Crago
Dennis Daugherty
Percy & Paula Duplessis
Vicki Fisher
Sandra Foster
Randy & Christy Graf

Pauline Hackmann
Richard & Ann Hammond
Charles & Regina Hines
Jeffrey & Lisa Huston
Debora Lutz
Linda Millington
Paul Molyneux
Ruth Searles
Melody Shipley
William & Muriel Sidwell
Janice Spencer

Sam & Vonda Strawn
Margaret Thomas
Pamela Tysinger
Sharon Wilkins

Patricia Arledge
Richard Chilcote
Patricia Dilley
Ellsworth Abrams Jr
Gary Farmer
Joyce B. North
David A. Spears
Larry Tipple
Julia Wildman

Current as of
December 9, 2011

A "Fun" Display Case

A whimsical and fun-loving display case awaits! Enjoy a trip back to your youth with M & M's and Nutcrackers. If a smile is overdue, stop and enjoy the display case. Thanks, Roger, for the memories.



Time For An Election

The Olivedale annual meeting is fast approaching and the nominating committee is currently talking with members who are willing to consider a two year commitment on the Board of Directors. We have four positions to fill at the March annual meeting. The Olivedale Board is made up of 13 volunteers willing to represent the members of Olivedale and attend monthly meetings to managing Olivedale finances and discuss improvement projects or member concerns. Please give some thought to becoming a Board Member. We invite anyone interested to join one of our monthly meetings to get a feel for what the Board is all about. If any member has interest, contact the office or any of the Board member listed on Page 2 of the Oak Leaf.

Winter Weather Report

January is here and so is ice and snow.

Olivedale closes at a level 2 snow

emergency. We do not follow the same protocol as the local schools system. Please watch NBC, CBS or ABC news for closings. If we are closed, it will be for the entire day and all activities will be cancelled for the day.

The following explains levels 1, 2 and 3 snow emergencies:

Level 1 means roads (township, county and mainly secondary) are hazardous with the possibility of blowing and drifting snow. Roads are icy and drivers should use caution.

Level 2 means the roads (including primary) are hazardous with blowing and drifting snow a possibility. Only those who feel it is necessary to drive should be on these roadways.

Level 3 means the roads are closed to all non essential personnel. No one should be out during these conditions unless it is absolutely necessary to travel. Travelers could be subject to citation or arrest.

FEBRUARY NEWSLETTER REMINDER

Deadline **Friday, January 6, 2012** Newsletter folding **Monday, January 23, 2012**



Day Trips

November Trip Reminders:

*Jungle Jims; Jan 11 ~ Conn's & Hartstone;
Jan 17 ~ Pizza; Jan 23 ~ Gardens; Jan 31*

February Trip Sign-Ups Start FRIDAY, JAN 6

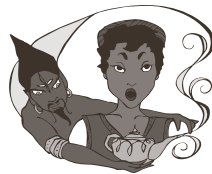
Disney On Ice~100 Years



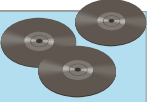
100 years of magic is waiting for you to enjoy on **Saturday, February 4**. Join the celebration as 65 of Disney's unforgettable characters from 18 beloved stories come to life. Join the one and only Mickey Mouse, the irresistible Minnie Mouse, Goofy, Donald Duck, Jiminy Cricket, Pinocchio and all Disney princesses in a skating spectacular you'll remember forever! The performances are incredible! Afterward, at approximately 2:30p, lunch will be on your own at a bright spot—the Sunny Street Café. **\$30** includes travel and admission. **Departs 9:30a; returns 5:00p**. Make sure you eat a large, late breakfast before departing since lunch is not until 2:30p. Remember to wish upon a star because dreams do come true!

Spencers Theatre Of Illusion

Reward yourself with a unique Valentine gift by traveling to the Palace Theatre in Marion, Ohio where you will share the evening with the fabulous Spencers. The Spencer duo have been described as modern day Houdinis by the critics. They present a big, high-tech stage show that combines drama, comedy, romance and suspense with elaborate stage illusions. On **Saturday, February 11**, be prepared to experience the magic yourself because the Spencer's don't want you to just sit in your seat and watch, they want participants! **Depart 4:00p; return 11:00p**. **\$40** for travel and show. Lunch is on your own at Infinity, located in the historic Hotel Harding and serving fresh baked breads and pastries baked daily.



A Closer Walk With Patsy Cline



Voted number one by the artists and members of the country music industry, Patsy Cline, since her death in 1963 at age 30, has been considered one of the most influential, successful and acclaimed female vocalists of the 20th century. Singing such hits as *Crazy*, *'Walkin' After Midnight*, *She's Got You* and *Sweet Dreams*, in her rich tone and expressive bold contralto voice, has been cited as an inspiration by many vocalists of various music genres. The show at LaComedia Dinner Theatre on **Thursday, February 23**, will follow Patsy Cline's climb to stardom from her hometown in Virginia to The Grand Ole Opry, Las Vegas and Carnegie Hall. **\$57** travel, admission and a fabulous lunch. **Departs 8:30a and returns 5:30p**.

Tulips, Teddy Bears, Trout & More....

Make plans now to travel **Monday, April 30 and return Friday May 4** to Michigan, the Wolverine State. The trip will be during the tulip festival in Holland where a costumed guide shows you 1000's of tulips and more! You will go to the Delftware factory & see wooden shoes made, to the Henry Ford Museum where antique cars are just a small fraction of what you will see, to Greenfield Village, a village full of log cabins, showing a way of life for pioneers and where Thomas Edison and others are featured. You will go trout fishing and make pretzels; you will tour a firehouse museum, the beautiful St Lorenz Lutheran Church, the town of German based Frankenmuth, a Dutch Village, a Windmill Island and the Jiffy Mix factory. This Treasure Grove Travel vacation includes all 4 nights lodging, 4 breakfasts, 1 lunch, 4 dinners, travel insurance, taxes, luggage handling, guided tours, driver tips and attractions! Prices per person: **Single \$1061/ Double \$821/ Triple \$749**. \$100 down, balance due March 15, 2012.

Olivedale Senior Citizens of Fairfield County
253 Boving Road
Lancaster, OH 43130-4240

PH: 740-687-6655 FX: 740-681-5020
Email: staff@olivedale.com
Website: www.olivedale.com

Non-Profit Organization
U.S. Postage Paid
Permit 57
Lancaster, OH 43130

Return Service Requested



Renewal Notice:

S thru Z — Due Jan. 1

\$12 Per Person Per Year

January 2012

Sunday Slide Series

ADMIT ONE



Presented by the Friends of the Parks every Sunday in February beginning February 5th. Show time is 2:00p. Help rid yourself of the winter blues and enjoy slides and commentary with light refreshments. Watch February's newsletter for details of each week's subject.