



The Oak Leaf

The Monthly Newsletter of Olivedale Senior Center

JULY 2026 / VOLUME 54, ISSUE 7



Surviving the Streets Safety Seminar



Join Chris Sheffield, Mugger Slugger **Monday, July 13 at 1:00p** for a practical, easy-to-follow personal safety training to help seniors learn simple awareness techniques, how to recognize and avoid potential threats, and what to do if confronted with dangerous situations.

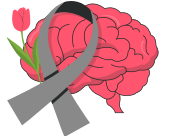
This ticket should be presented at the event. Register now through July 16 at 4:00p. No tickets issued after 4:00p on the 16th. Please contact the office prior to July 16 for a replacement if lost. "Life is short, so eat dessert first!"

New Member Meeting



New Olivedale Senior members are invited to RSVP to a New Member Meeting **Tuesday, July 14 at 1:00p**. More on pg. 7.

Parkinson's Seminar



Parkinson's disease is a slow, progressive disease that can affect every part of daily life. Join Andrew Burkhardt, with Abbott on **Monday July 20 at 1:00p** to discuss the disease and essential tremor and how brain therapies like Deep Brain Stimulation (DBS) as a treatment can help people restore control over their lives.

Ice Cream Social



The annual Olivedale Senior member ice cream social sponsored by Halteman, Fett and Dyer is **Thursday, July 16 at 5:30p - 6:30p**. All members are welcome, but must register at the office. The receipt received at registration is your "ticket".

Festival Performance at Olivedale



The Lancaster Festival will present a quartet performance on **Friday, July 24 at 1:00p**. Due to the performance, there will be no senior activities from 1:00p - 2:00p. Fitness Center will remain open.

OUR MISSION

To provide an atmosphere for friendships and feeling of connection with others for senior citizens of the community, learning through educational and recreational opportunities, promote wellness and social activities that encourage service to the senior center and entire community.

Park Events:



Olivedale Park

Mondays - Line Dance
 5:00p Beginners
 5:30p Intermediate
 All ages (accompanied by an adult) held at Olivedale
 \$4/class.

Alley Park

Exploring our Parks:

Sunday, July 19 - Shady Tree Hike

Wise Walkers

9:00a - 11:00a -Wednesday,
 July 8 - Smeck Park

Friday Night Bandstand

Start 6:30p Opening Acts followed by Main Act:
 July 10 - British Invasion
 July 31 - Red Light Go

2nd Tuesday Lunch

What's more American than baseball? Join guest cooks Marty & Cathy Duccilli **Tuesday, July 14** for a homerun menu of Philly

Cheese Steak, fries and apple pie (coffee or iced tea included). Served from **11:30a - 12:30p**. All for the price of **\$8.00!** Pre-register by Friday, July 10. Open to all Olivedale Senior members. Take out is available for pickup after 12:00p. Just let the office know during purchase.



Olivedale will introduce Deli Days every Tuesday and Wednesday (with the exception of 2nd Tuesday Lunch week) offering a rotating weekly menu of house-made soups and chilled deli salads, prepared and packaged for both on-site consumption and take-home convenience. **SEE more information on Pg 7.**



Olivedale Account Review

Wow, the year is moving quickly — we are already halfway through 2026. This is an excellent time to ensure that your account information is current if you've moved, changed a phone number, or emergency contact. If comfortable reviewing your details in the MyRec portal, please visit www.lancasteroh.myrec.com and sign in to verify your address, phone number, and emergency contact information. If you would prefer assistance, feel free to stop by the office, and we will be happy to help you confirm that your information is up-to-date.



ABOUT US

Olivedale Senior Center is a part of Lancaster Parks & Recreation

Steve Gayfield, *Superintendent of Parks*
 Carla Young, *Park Supervisor*

The elected Board of Directors represent the members of Olivedale. They welcome questions and comments from all members. Please feel free to approach any of the listed Directors to express your concerns or write them down and leave them at the office. If you are not sure how to get in touch with a board member, please ask the front desk.

BOARD OF DIRECTORS

Meets every 3rd Wednesday at 11:00a.
Meetings are open to the public.

- | | |
|-----------------------------|--------------------|
| Jim Brownfield, President | Anne Anderson |
| Nancy Blair, Vice President | Carl Drury |
| Kelly Prinz, Secretary | Catherine Duccilli |
| Karen Sanner, Treasurer | Ellen Simmons |
| John Lunn, Legal Advisor | Bob Kalish |
| Larry Wentz, Past President | William Reed |

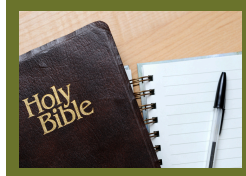
Bell Choir

The Bell Choir will meet only once for practice in July on **Wednesday, July 8** at **9:00a**. If interested in joining Bell Choir, please contact Joyce at 740-653-4464.



Bible Study

Join the Bible Study group on **Wednesdays** at **9:45a**. New members welcome for fellowship.



The "Bookies"

Bookies invites you to join us at **1:00p Tuesday, July 21**



as we journey to 1922 Moscow with Amor Towles 'A Gentleman in Moscow.' In that year, Count Alexander Rostov is judged an unrepentant aristocrat by a Bolshevik tribunal. His sentence is house arrest in the grand Hotel Metropol which glitters across the street from the Kremlin itself. This erudite and witty man, who has never worked a day in his life, will no longer reside in the lavish corner suite, but view the world from a small attic storage room while decades of tumultuous Russian history pass by outside his window. Surprisingly, his reduced circumstances and confinement bring him into a greater world of emotional discovery. He watches, he learns, he befriends, and he adjusts. This beautiful & lyrical novel brings us to the heart of Count Alexander, whose interior journey is profound. Pick up your copy at the Info Desk at Fairfield Library. To find out more about Bookies, call Barb Ramsey at 740-653-3897.

Coffee Club

Due to the July 4th holiday falling on July 3rd, the Coffee Club will not meet in July and will pick up in August. Contact Luann Snyder at 740-653-2308 for questions.



Military Veterans of Olivedale

Watch for our float in the July 4th parade! Our meetings will be **Monday, July 6th and 20th at 1:00p**. We will take a trip to Utica on Tuesday, July 28th. Military Veterans of Olivedale members who wish to go need to contact Bill for a seat on the bus. The bus leaves at 10:00 am. All military veterans who are members of Olivedale Senior Center are welcome to attend meetings. For information, call Bill at 740-624-3604. You can leave a voice message or send a text. Check us out on the web at militaryveteransofolivedale.com.



Moving Forward Healing Hearts

A support group, led by Cathy Duccilli on the **1st and 4th Wednesdays of the month at 12:30p**.



This group is designed for anyone who has experienced loss and is seeking a compassionate space to process grief, share experiences, and take steps toward healing. The focus is on moving forward at your own pace, finding strength through connection, and supporting one another in a caring, understanding environment.

Rambling Designers Garden Club

The Rambling Designers will meet at Olivedale for a presentation by Carrie Brown and Kay Sargent on "Planting for Pollinators in the Home Landscape" on **Tuesday, July 7 at 1:00p**. If you have any questions please call Mike at 740-438-0603.



The Sometimers

The Sometimers will meet at noon on **Friday, July 17**, at the Olive Garden restaurant in Lancaster. Please call 740-746-8647 to make your reservation by Monday, July 13. We will eat, drink and make more memories.



Artist Hour

Join us **Mondays** at **1:00p** to create and discuss art. Benefit from our members sharing demonstrations of techniques, use of materials and tools of art. All levels and any medium welcome.



Chair Dancing Class

Embrace the rhythm and flow of dance without the need to stand. This chair dancing class is tailored for those who have mobility, hip and knee issues or find it a challenge to stand for long periods while dancing. This class promises a fun, energetic start to your **Friday** mornings at **9:00a**. Class is free!



Clogging Class

Clogging Class is every **Monday** at **10:00a**. Cost is \$2.00 per class. Beginners can receive extra help one hour before class at 9:00a. Clogging is uniquely American incorporating Step, Jig and Rhythms made with the toe or heel. It's great exercise.



Couples Dance Class

Class is **Fridays** at **12:30p**. All skill levels welcome. This class will prepare you for social dancing at Olivedale. Fee is \$5.00/person per class collected by the instructors Dave and Diana. Attn: Gentlemen! We currently have a few ladies looking for a dance partner to attend class. It's time to unleash your inner "Fred Astaire"! No pre-registration needed.



Hooks & Needles

For our 2026 service project, we will be making shawls for seniors. We will be collecting shawls until October then donating them to individuals in local assisted living. As always,



if you want to learn how to knit or crochet, if you need help with a pattern or if you just want to knit and crochet with friends come join us. We have experienced knitters and crocheters to help at any stage of your journey. We meet on **Mondays** at **10:00a**.

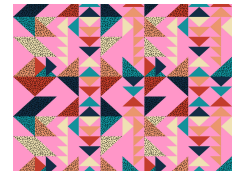
Line Dance

Classes for Olivedale members, all experience levels. Fee is \$3/person or \$5/couple. Join us **Tuesday, Wednesday** and **Friday** at **10:00a** for beginners, or **11:00a** for more advanced dancers.



Quilt Charms

We will not be meeting on July 23 as many of us will be attending the Goodtimers Quilt Show at OCU in Circleville. Every other **Thursday** in July, though, we'll be learning new techniques & having fun - join us at **9:00a!**



Tatting

Tatting meets every **Monday** at **10:00a**. Try this delicate needlework art form. Lessons provided for beginners.



Photography Enthusiasts!

Are you interested in photography? We are gauging interest in forming an Olivedale Photography Club. If you are interested contact the office at 740-687-6655. We would love to bring together local shutterbugs to share tips, and a passion for the craft.



WELLNESS – WATER CLASSES

3rd Quarter Session. "All Inclusive" Pass and Registration required for pool classes.

Time	Monday	Tuesday	Wednesday	Thursday	Friday	Saturday
7:00a	Open Pool	Open Pool	Open Pool	Open Pool	Open Pool	Closed
8:00a	Silver Splash	Silver Splash	Silver Splash	Silver Splash	Silver Splash	Open Pool
9:00a	Aqua Challenge	Aqua Core	Aqua Challenge	Aqua Core	Aqua Challenge	Open Pool
10:00a	Light Aerobics	Arthritis	Light Aerobics	Arthritis	Light Aerobics	Open Pool
11:00a	Joints in Motion	Arthritis	Joints in Motion	Arthritis	Joints in Motion	Close at 12:00p
12:00p	Open Pool	Open Pool	Open Pool	Open Pool	Open Pool	Closed
1:00p	Water Workout	Aqua Aerobics	Water Workout	Aqua Aerobics	Water Yoga	Closed
2:00p	Open Pool	Open Pool	Open Pool	Open Pool	Open Pool	Closed
3:00p	Open Pool	Open Pool	Open Pool	Open Pool	Open Pool	Closed
4:00p	Lap Swim	Lap Swim	Lap Swim	Lap Swim	Close at 4:30p	Closed
5:00p	Open Pool	Aqua Blast	Open Pool	Aqua Blast	Closed	Closed
6:00p	Aqua Fit	Aqua Fit	Aqua Fit	Aqua Fit	Closed	Closed

SilverSneaker Members: Remember to use the tablet to scan the square barcode from your SilverSneaker issued card. SilverSneakers requires the date stamp in the tablet when scanned. Please make an attempt to have your card at every visit. Keeping a picture saved on your phone works also.



JEFF METZGER CONSULTING, LLC

Your Health Insurance Consultant.

614-965-1114
 JeffMetzgerConsulting@gmail.com

- No cost consultation
- Medicare Supplements
- Medicare Advantage plans
- Medicare drug plans

ADT-Monitored Home Security

Get 24-Hour Protection From a Name You Can Trust

- Burglary
- Fire Safety
- Flood Detection
- Carbon Monoxide




Authorized Provider | SafeStreets | **833-287-3502**



Sole Solutions
 Nurse Delivered Footcare
 The First Wednesday of every month • 8:00am-5:00pm
 BY APPOINTMENT ONLY Call Kathy Maxson BSN RN
 (614) 361-5284
 1/2 hour appointments are \$40 No nail polish



THE RIDGE AT LANCASTER
 a tradition of caring
(740) 681-9903
 Respite Stay & Assisted Living
 241 Whittier Dr. S | Lancaster, OH 43130
WWW.RDGLANCASTER.COM

In-Home Services for Seniors by Seniors
 The Comfort of Home, Care from a Friend

Call us for an extra set of hands with housekeeping, shopping, meals, personal care and so much more.

Bringing Love into the Lives of Seniors with Dignity and Respect



Seniors Helping Seniors®
740-292-2949
 MidOhioSeniorCare.com



We Hire Seniors!

HEALTH & FITNESS CENTER

HOURS:

Monday - Thursday
7:00a - 7:00p

Friday
7:00a - 4:30p


Saturday Summer Hours
(excluding holiday weekends)
May-Aug 8:00a - 12:00p



Lancaster Parks & Recreation
Health & Fitness Center

Go to <https://lancasteroh.myrec.com>, log into your account to purchase a Health & Fitness membership pass on-line

3rd Quarter 2026 Pool Session
3rd Quarter Session (Jul/Aug/Sep) started June 29. To register, log into the LPR portal, stop by the office or call (740-687-6655) to speak to an employee. Do Not leave a message. Registration AND "All Inclusive" membership pass or Medicare Insurance reimbursement enrollment is required for all pool classes.

Time	Monday	Tuesday	Wednesday	Thursday	Friday	Saturday
7:30a		Spin w/Amy		Spin w/Amy		
8:00a	Morning Spin	8:15a Suspended Strength	Morning Spin	8:15a Suspended Strength		
9:00a	Chair Yoga Strength & Flexibility	Strength & Flexibility	Chair Yoga Strength & Flexibility	Strength & Flexibility	Yoga Stretch	Zumba
10:00a	Rock Steady Boxing 10:15a SilverSneakers	Zumba Gold	Rock Steady Boxing 10:15a SilverSneakers	Zumba Gold	10:15a SilverSneakers	
11:00a			11:05a Beginning Mat Yoga		Close at 4:30p	Close at 12:00p
5:00p	Barre Fit	Zumba & Lift	Pilates	Buti Yoga		
6:00p	Yoga	Yoga Stretch Instructor's Choice	Zumba	Yoga Muscle Madness		

LPR Health & Fitness Center					
Monthly Membership Pass Options (*Member must have current Olivedale Senior Membership)					
Membership Pass	Pass Details	30 days	60 days	90 days	
*Olivedale Senior BASIC (code required)	Gym only	\$10	\$20	\$30	
*Olivedale Senior BASIC PLUS (code required)	Gym, Exercise & Open Pool	\$20	\$40	\$60	
*Olivedale Senior ALL INCLUSIVE (code required) (NOT FOR SilverSneakers/Renew Active/Silver&Fit members.)	Gym, Exercise, Open Pool & Pool Classes.			\$72	
BASIC	Gym only	\$12	\$24	\$36	
BASIC PLUS	Gym, Exercise & Open Pool	\$22	\$44	\$66	
ALL INCLUSIVE (NOT FOR SilverSneakers/Renew Active/Silver&Fit members.)	Gym, Exercise, Open Pool & Pool Classes.			\$78	

LPR Health & Fitness Center: REMINDER: If taking a pool class you MUST be registered for classes. No exceptions. Please note Saturday summer hours (May-Aug) 8a-12p. Health & Fitness Center CLOSED July 3 & 4.

Deli Days ... cont.

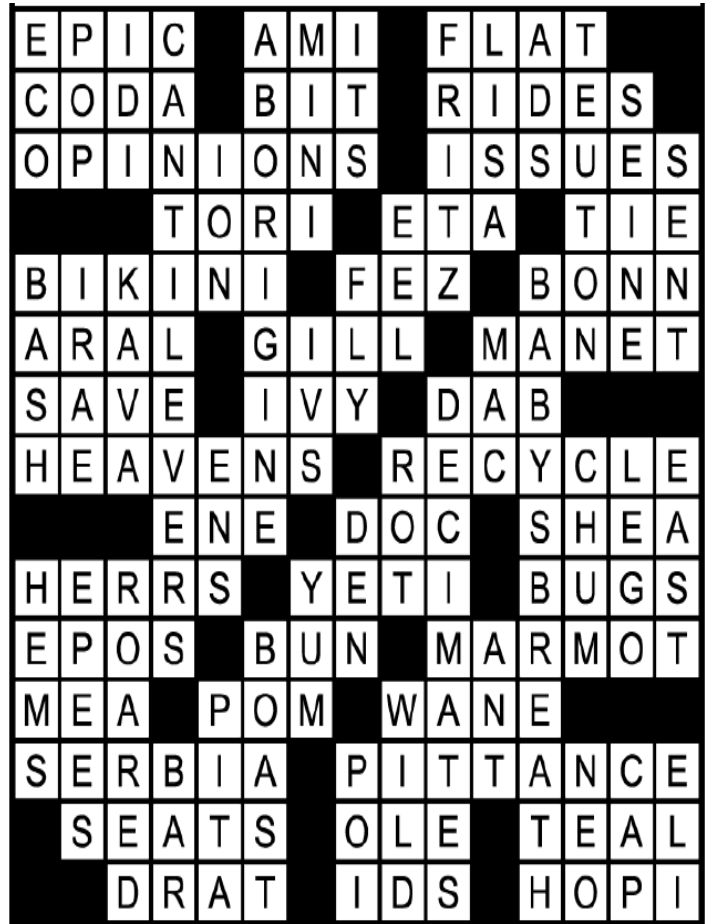
Fresh - Nutritious - Homemade

The kitchen will make a limited amount to offer 8 oz servings of Deli Salads and 16 oz servings of soup on Tuesdays and Wednesdays (with the exception of 2nd Tuesday lunch week) until sold out. Prices will be posted at the office. All purchases will be made through the office. Listed are the menus for July:

<u>DATE</u>	<u>Salad</u>	<u>Soup</u>
July 7/8:	Chicken	Tomato Basil
July 14/15:	Macaroni	Chicken Noodle
July 21/22:	Ham	Vegetable
July 28/29:	Egg	Potato



June Puzzle Answers:



Welcome - New Member Meeting.

We invite you to join us at a "Getting to Know you" reception **Tuesday, July 14 at 1:00p**. This reception/meeting is for our new and nearly new members to help you get acquainted with others and to discover more about Olivedale and what it has to offer you. Learn the history of Olivedale, information on activities and volunteer opportunities. If you did not receive an invitation when you joined, please contact the office (740-687-6655). We look forward to meeting you.



SUN	MON	TUE	VED	THU	FRI	SAT
			1	2	3	4
			Deli Days 9:45a Bible Study 10:00a Beg. Line Dance 11:00a Adv. Line Dance 11:15a Lunch Bunch @ Nut Cracker-Pataskala 12:15p Moving Forward	9:00a Quilt Charms 9:00a Ping Pong 1:00p Mahjong 1:00p Bingo 1:00p Cards/Games	Olivedale Closed 	
5	6	7	8	9	10	11
	9:00a Woodcarvers 10:00a Tatting 10:00a Clogging 10:00a Hooks & Needles 1:00p Veterans Mtg. 1:00p Artists Hour 1:00p Rummikub 5:00p Line Dance	Deli Days 9:00a Ping Pong 10:00a Beg. Line Dance 11:00a Adv. Line Dance 1:00p Rambling Designe 1:00p Dominos 1:00p Cards/Games	Deli Days 9:00a Bell Choir 9:45a Bible Study 10:00a Beg. Line Dance 11:00a Adv. Line Dance 11:15a Lunch Bunch @ Bob Evans 12:15p Moving Forward Healing Hearts 1:00p Euchre	9:00a Quilt Charms 9:00a Ping Pong 1:00p Mahjong 1:00p Bingo 1:00p Cards/Games	9:00a Woodcarvers 9:00a Chair Dancing 10:00a Beg. Line Dance 11:00a Adv. Line Dance 12:30p Couple Dance	DANCE TONIGHT 7:00p - 10:00p <i>Sockhop</i> <i>Johnn Garber</i> 
12	13	14	15	16	17	18
	9:00a Woodcarvers 10:00a Tatting 10:00a Clogging 10:00a Hooks & Needles 1:00p Artists Hour 1:00p Rummikub 1:00p Safety Seminar 5:00p Line Dance	9:00a Ping Pong 10:00a Beg. Line Dance 11:00a Adv. Line Dance 11:30a - 12:30p 2nd Tuesday 1:00p New Member Meeting 1:00p Dominos 1:00p Cards/Games 1:00p Euchre	9:45a Bible Study 10:00a Beg. Line Dance 11:00a Adv. Line Dance 11:15a Lunch Bunch @ Buffalo Wild Wings 12:15p Moving Forward	9:00a Quilt Charms 9:00a Ping Pong 1:00p Mahjong 1:00p Bingo 1:00p Cards/Games 5:30p - 6:30p Ice Cream Social 	9:00a Woodcarvers 9:00a Chair Dancing 10:00a Beg. Line Dance 11:00a Adv. Line Dance 12:30p Couple Dance	
19	20	21	22	23	24	25
	9:00a Woodcarvers 10:00a Tatting 10:00a Clogging 10:00a Hooks & Needles 1:00p Veterans Mtg. 1:00p Artists Hour 1:00p Rummikub 1:00p Parkinsons Seminar w/ABBOTT 5:00p Line Dance	Deli Days 9:00a Ping Pong 10:00a Beg. Line Dance 11:00a Adv. Line Dance 1:00p Dominos 1:00p Cards/Games 1:00p Euchre 1:00p Bookies	Deli Days 9:45a Bible Study 10:00a Beg. Line Dance 11:00a Adv. Line Dance 11:15a Lunch Bunch @ Puerto De Vallarta 12:15p Moving Forward Healing Hearts 1:00p Euchre 1:00p Stepping On	9:00a NO Quilt Charms 9:00a Ping Pong 1:00p Mahjong 1:00p Bingo 1:00p Cards/Games	9:00a Woodcarvers 9:00a Chair Dancing 10:00a Beg. Line Dance 11:00a Adv. Line Dance 12:30p Couple Dance 1:00p Lancaster Festival Performance 	Deadline Sep Newsletter 
26	27	28	29	30	31	
	NL Folding 9:00a Woodcarvers 10:00a Tatting 10:00a Clogging 10:00a Hooks & Needles 1:00p Artists Hour 1:00p Rummikub 5:00p Line Dance	Deli Days 9:00a Ping Pong 10:00a Beg. Line Dance 11:00a Adv. Line Dance 1:00p Dominos 1:00p Cards/Games 1:00p Euchre	Deli Days 9:45a Bible Study 10:00a Beg. Line Dance 11:00a Adv. Line Dance 11:15a Lunch Bunch @ Olive Garden 1:00p Euchre 1:00p Stepping On	9:00a Quilt Charms 9:00a Ping Pong 1:00p Mahjong 1:00p Bingo 1:00p Cards/Games	9:00a Woodcarvers 9:00a Chair Dancing 10:00a Beg. Line Dance 11:00a Adv. Line Dance 12:30p Couple Dance	

September Newsletter Reminder - Deadline Saturday, July 25, 2026
 Newsletter folding for August newsletter Monday, July 27.

CROSSWORD PUZZLE

ACROSS

- 1 Driving while intoxicated (abbr.)
- 4 Rodent
- 7 Curve
- 10 Principal
- 11 Raw mineral
- 12 Accountant (abbr.)
- 14 Pimento
- 16 Asian desert
- 17 Drone
- 18 Hindu prayer position
- 20 Kimono sash
- 21 Landed
- 22 Javanese carriage
- 24 Small woodpecker
- 28 Simple organism
- 31 Maple genus
- 32 Tenth of a sen
- 34 Ancient church platform
- 35 Lead-tin alloy

- 37 Cue (2 words)
- 39 Mine entrance
- 41 Small (Scot.)
- 42 Shak. contraction
- 44 Ger. spa
- 46 Yorkshire river
- 49 Asian weight
- 51 Think
- 53 Actual being
- 54 Greek letter
- 55 Locality
- 56 Hyson
- 57 Quaker pronoun
- 58 Television channel

DOWN

- 1 Printer's direction
- 2 Grain
- 3 Legal proof
- 4 Riot
- 5 Ecclesiastic box
- 6 Adolescence
- 7 Sup
- 8 Sailboat
- 9 Wound crust
- 10 Habakkuk (abbr.)
- 13 Three (pref.)
- 15 Container
- 19 Air-to-air missile (abbr.)
- 21 Ghastly

- 23 Old Sp. gold coin
- 24 Lumberman's boot
- 25 Amazon tributary
- 26 Rayon
- 27 Gratuity
- 29 Love (Lat.)
- 30 Arabic letter
- 33 Posy
- 36 Bird's beak
- 38 Everywhere (pref.)
- 40 Silence: music
- 42 Summer (Fr.)
- 43 Asia
- 45 Old-style verb
- 46 Deserve
- 47 Machine gun
- 48 Cyclades island
- 50 Pasture
- 52 Tactical Air Command (abbr.)



	1	2	3		4	5	6		7	8	9	
10					11				12			13
14				15					16			
17				18				19		20		
			21				22		23			
24	25	26				27		28			29	30
31					32		33		34			
35				36		37		38				
			39		40		41					
42	43			44		45			46	47	48	
49			50		51			52				
53					54				55			
	56				57				58			

Lunch Bunch

July 1 - 11:15a Nut Cracker -Pataskala

July 8 - 11:15a Bob Evans

July 15- 11:15a Buffalo Wild Wings

July 22- 11:15a Puerto De Vallarta

July 29- 11:15a Olive Garden

To be added to reservations or carpool out-of-town, Call Kathy at 440-655-9416.

Carpoolers meet at Olivedale's lower parking lot by 10:30a.



Olivedale Woodcarvers

The Woodcarvers meet every Monday & Friday at 9:00a on the first Monday of every month they will offer a free beginners carving class. If you have questions, please contact Jacque at 740-687-4729 or Ray at 740-438-9624.



WELCOME NEW MEMBERS

Frances Birchfield
Ken and Karen Blevins
Melanie Chambers
Virginia Giglio
Charity Ireland
Sherri Johnson
Karen Osborn
Nellie Reincheld

David & Penny Rheinscheld
Virgina Shafer
Rod Swingle
Rosa Welsh

As of May 26, 2026

In Memory.

William Andrews
Max Martin
Judy D. Morgan




We're Hiring Ad Sales Executives

- Paid Training
- Full-time with Benefits

Visit www.lpicommunities.com/careers



FAIRHOPE
HOSPICE & PALLIATIVE CARE
HOME OF THE PICKERING HOUSE

Wish to give back?
Become a Volunteer!

Join Our Team! Call Tuglia Summers, Volunteer Manager (740) 475-0657

www.fairhopehospice.org
740-654-7077 • 800-994-7077



NOW OPEN!

  Pet Friendly

1572 Timbertop Street
Lancaster, OH 43130
(740) 675-5917
LiveKingsbury.com



Thoughtfully Designed Independent & Assisted Living for Ohio Seniors.

Billiards club

The billiard tables are available to all Olivedale Senior members during Olivedale hours.

BINGO Thurs 1:00p - \$1.50

Enjoy a variety of styles of bingo.

Bridge Tues

If you would like to join us at the bridge table on Tuesdays or if you need a refresher contact Marty at 740-777-7080 for details.

Cards/Games Tues & Thurs 1:00p

Card tables will be available for any game of choice.

Dominos - Tues 1:00p

**American & Chinese Mahjongg
Thurs 1:00p (All Skill levels welcome)**

Come play Mah Jongg ! Join us **Thursdays** at

1:00p for this fun and challenging game. All skill levels are welcome to play either the Chinese or American version. Call Cathy at 740-652-0206 for more information.

Pinochle - Tues & Thurs 1:00p

We are looking for players to join our Pinochle card group. If interested, please call the office at 740-687-6655.

Ping Pong - Tues & Thurs 9:00a

All experience levels welcome.

Progressive Euchre - Tues & Wed at 1:00p - \$1.50

No partner needed.

RUMMIKUB - Mon 1:00p

A tile-based game for 2 - 4 players, combining elements of the card game rummy and mahjong.

Games are free to all members unless noted.



Medicare Questions?
Let us help find the right plan for YOU!

- Medicare Advantage Plans
- Medicare Supplements
- Medicare Drug Plans
- Final Expense Insurance

Jeff Richardson
740-404-2631

Lynn Richardson
740-405-6631

Your local, licensed Medicare Specialists
www.BothHandsFG.com




Halteman-Fett-Dyer
FUNERAL HOME & MEMORIALS
"Serving All Faiths"

436 NORTH BROAD STREET
LANCASTER, OH 43130

740-653-302 | A.J. DYER, MANAGER

Fairfield County's #1 source for senior services ensuring health, connection, and independent living.



THE SENIOR Hub | **MEALS on WHEELS**
FAIRFIELD COUNTY

MORE THAN A MEAL[®]

- Meals on Wheels
- Community Dining Programs
- Minor Home Repairs
- In Home Services
- Emergency Response Systems
- Caregiver Support
- Volunteer Opportunities
- and more...

740-681-5050
www.theseniorhubfc.org
Serving Fairfield County for over 50 years




Trusted In-Home Care

Live life your way! From a few hours to 24/7 care, we're there when and where you need us.

Personal Care, Housekeeping, Companionship and More!

740-689-9410
homehelpershomecare.com/lancaster

Each office is independently owned & operated



Stepping On

Stepping On Class

A program researched and proven to reduce falls. This workshop meets 2 hours a week for 7 weeks. Workshops are led by health professionals concerned about falls and local guest experts providing information on exercise, vision, safety, and medications. Join OhioHealth and FCHD at Olivedale starting **July 22** every **Wednesday** through **September 9** from **1:00p-3:00p**. Please register for this class via email staff@olivedale.com or call 740-687-6655. Registration is limited.

Neuromovement® Class



Becky Frank will be taking a summer break through July, but will return **August 7** and every other **Friday** at **10:00a** for the Neuromovement® class.

Neuromovement® is a variation of slow, gentle movements to encourage the brain to improve the body-mind connection which may improve mobility, memory and overall well being. Class is \$6/session paid to Becky at the time of class.



DISPOSAL

New Senior Benefit Front Door Trash Pickup

AT NO EXTRA CHARGE!

- No dragging cans to the curb
- Reduces fall risk
- No missed pickups

Call now for details: (740) 785-8555



Weekly Trash Pickup • Bulk Pickup • Dumpster Rental

BBDisposal.com



COME DANCE WITH US

(Unless Otherwise Noted) **OPEN TO THE PUBLIC** (Must Be 18+). \$5 **ADMISSION**. NO Carry-In Refreshments - Refreshments, Dinner Menu, and Drinks Available for Purchase. Doors Open 6:00p - Dance 7:00p-10:00p. Change limited. Please pay with smaller currency. **NO RESERVED TABLES**. Tables first come first serve.



DAY TRIPS



Valley Gem Sternwheeler ~ Marietta, OH

Travel with us to Marietta, OH on Friday, **August 21st** for a relaxing 2 hour cruise down the Ohio & Muskingum Rivers on the Valley Gem for an Admiral's Dinner Cruise.

Enjoy a delicious meal of appetizers, a prime rib steak dinner, salad, dessert along with live entertainment! **\$80.00** includes travel, cruise, dinner and entertainment. **Departing at 4:00p** and **returning** approximately at **10:30p**.



VACATION TRIPS



See the Olivedale office for vacation brochures. For reservations or questions please contact Sally Sutter at 740-407-2157 or mermaidtravel@gmail.com

Ontario Rail Adventure—9/14/2026–9/18/2026 \$1429.00/person

Rail from Windsor to Toronto, Toronto guided tour, Niagara Falls, Shaw Festival Production and much more!

Nashville Show Trip— 10/12/2026–10/16/2026 \$925/person

Experience Nashville's eclectic mix of legendary country music, historic elegance, celebrity wax figures, and dazzling dinner theater nightlife!

Canyon Country— 10/16/2026–10/23/2026 \$3,999/person

Scottsdale's luxury through the Grand Canyon's majesty, enjoying a stay at Lake Powell, and culminating in the vibrant lights of Las Vegas!

Christmas in New York City! – 12/11/2026 – 12/15/2026 \$3,549/person

Experience New York City for the holidays taken in the Rockettes, a Broadway Show, Rockefeller Center, Statue of Liberty, the 9/11 Memorial, holiday lights and much more.

Hawaii – 3/12/2027 – 3/21/2027 \$6386/person

Visit the Big Island of Hawaii, Honolulu, Hawaii's most famous black sand beach and see the powerful ocean waves of Oahu.

COMING SOON: West Virginia Rails & Williamsburg





Villas, Independent & Assisted Living, Memory Care

SEE WHY *"This is Living"* TOUR PRIMROSE RETIREMENT COMMUNITY AND GET A COMPLIMENTARY MEAL (Breakfast, Lunch, or Dinner)

To Schedule Your Personal Tour Call (740) 653-3900

PrimroseRetirement.com • 1481 Wesley Way, Lancaster, OH 



Welcome Home to **RESERVE** at Hunter Trace



1 bedroom 650 SF



2 bedroom 830 SF

Amenity-rich, affordable living for active adults

- Minutes from downtown
- Free on-site parking
- On-site medical care
- Open-concept living areas
- Designer-inspired kitchens
- Generous closet space
- Yoga, stretching, & fitness studio
- Expansive resident lounge
- On-site laundry care



Apply Now!

150 Trace Drive, Lancaster OH 43130
(740) 870-3432
huntertrace@fairfieldhomesohio.com
www.reservehuntertrace.com



Advertise Here!

Increase visibility in your community.

Does your organization need a newsletter?
We'll cover the printing costs!

Learn more at lpicommunities.com



Advertise in Our Newsletter!

Contact Derek Yang

dyang@4LPi.com
(800) 950-9952 x1514



Never miss our publication!

Get each new issue delivered straight to your inbox.


Scan to subscribe on MyCommunityOnline.com



CONTACT US

Olivedale Senior Citizens of Fairfield County

253 Bowling Road
Lancaster, OH 43130-4240
740-687-6655
email: staff@olivedale.com
www.olivedale.com

 Olivedale Senior Citizens of FC

Business Office Hrs: 8:00a -5:00p M-TH
8:00a -4:30p F



Non-Profit Organization
U.S. Postage Paid
Permit 57
Lancaster, OH 43130

EXPIRATION REMINDER

A to D - Mar 31 E to K - Jun 30
L to R - Sep 30 S to Z - Dec 31

Join Our Volunteer Family

Our events are only possible because of the dedication of people like you! We are looking for volunteers to help with upcoming events. The schedule and sign-up sheets are posted on the **Olivedale kitchen door**. Stop by to find a time that works for you! Or contact the office for more information and details on how to get started.

Upcoming Opportunities:

Saturday Dance Kitchen Help/Cashiers:

July 11 / Aug. 8 & 22

Deli Day Prep: Mondays (not 2nd Tues. week)

2nd Tuesday Lunch: July 14

Breakfast: Every Thursday starting Sep 3

Newsletter Labeling: July 27

Bingo Computer Operator & Caller:

Thursdays as needed

Kitchen Deep Clean Team: as needed

Cakes & Noodle Making Team#2: as needed

Silverware Wrapping: as needed

Filling Salt & Pepper Shakers: as needed



Looking ahead

EUCHRE TOURNAMENT August 1, 2026

Get ready for cards, competition, and great prizes! Join us **Saturday, August 1, 2026** for the Olivedale Senior Center Euchre Tournament, open to the public 18 and older. Doors open at 12:00p with play starting at **1:00p**. For just **\$10/person**, enjoy a complimentary snack bag and bottled water while you play. Test your skills, meet fellow card lovers, and win big with exciting prizes and a 50/50 drawing!

