



The Oak Leaf

The Monthly Newsletter of Olivedale Senior Center

JUNE 2025 | VOLUME 53, ISSUE 6



Downsizing

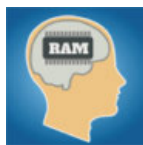
Have you been thinking about downsizing but don't know where to start? Join Leanne Henry

Monday, June 2 at 1:00p for a seminar on downsizing. Whether you're seeking a smaller, more manageable space or embracing a minimalist approach, downsizing encourages thoughtful decisions about what to keep and what to let go. Ultimately, a smaller home can bring a sense of freedom, making room for new adventures and priorities.



Dementia/Alzheimer's and Memory Care

Please join Catherine Herd, Primrose Retirement Communities **Monday, June 9 at 1:00p** to explore the complex and emotional journey of dementia and Alzheimer's disease



and the impact and challenges on families and caregivers. We delve into the signs and symptoms of cognitive decline and how to recognize when daily life becomes unmanageable. This conversation will also highlight what memory care is, how it differs from traditional care and how to determine the right time to transition a loved one into memory care.

Juneteenth

Our offices will be closed on Thursday, June 19th in celebration of Juneteenth. The celebration marks the day in 1865 when enslaved people in Galveston, Texas learned of their freedom—more than two years after the Emancipation Proclamation was issued. It is now a national holiday, honoring the end of slavery in the U.S. and celebrating African American culture and achievements.



OUR MISSION

To provide an atmosphere for friendships and feeling of connection with others for senior citizens of the community, learning through educational and recreational opportunities, promote wellness and social activities that encourage service to the senior center and entire community.

Park Events

Olivedale Park

Mondays 5:30p
Line Dance Class. All ages
(accompanied by an adult)
held at Olivedale \$4 /class.

Alley Park

6/12/2025 Wise Walkers Senior
Hiking Group 9-11a Keller-Kern
Park

Miller Pool

6/12/2025 Summer Night Series
"Teen Night" Age 12-17 FREE

6/21/2025 Summer night Series
"Dive In Movie" 7-11p

Friday Night Bandstand

6/6/2025

6p: Eric Atkinson
7p: Kalysta Minton & Band

6/13/2025

6p: Kade Dennison
7p: The Fabulous Barnstormers

6/20/2025

6p: Matt Willaman
7p: Thunderstruck

6/27/2025

6p: Lancaster Community Band
7p: Abby Miller & Band



Like us on Facebook:
[Lancasterparksandrecreationdepartment](https://www.facebook.com/Lancasterparksandrecreationdepartment)

To sign into the LPR portal go to:
<https://lancasteroh.myrec.com>

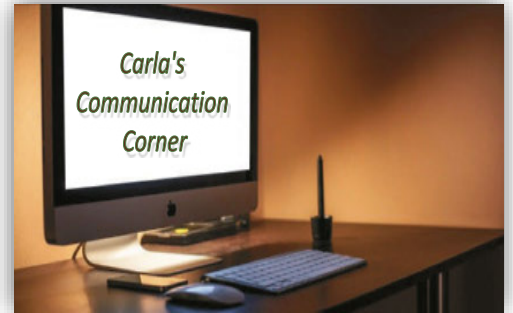
2nd Tuesday Lunch

Join us on **Tuesday, June 10**
for our 2nd Tuesday Lunch.
Menu includes meatloaf,
mashed potatoes and gravy,
peas, roll with butter and a
brownie for dessert (coffee or
iced tea included). Open to
all Olivedale Senior
members. Serving is from
11:30a—12:30p. Cost is **\$8.**
Reservations and payment
must be made by **Friday,**
June 6.



Silver Spoon Breakfast

Taking a break .



Part-Time Cook

It is with mixed
feelings that we
announce
Connie Russell,
our long-time
cook has decided to leave
her position and enter the
next chapter in her life
journey. We wish her well
and hope our volunteers will
continue to support the next
person who enters the
kitchen as the Olivedale
cook. If anyone has interest
in this position or knows of
someone who might be
interested, please reach out
to the office.



ABOUT US

**Olivedale Senior Center is a part of
Lancaster Parks & Recreation**

Steve Gayfield, *Superintendent of Parks*
Carla Young, *Park Supervisor*

The elected Board of Directors represent the
members of Olivedale. They welcome questions and
comments from all members. Please feel free to
approach any of the listed Directors to express your
concerns or write them down and leave them at the
office. If you are not sure how to get in touch with a
board member, please ask the front desk.

BOARD OF DIRECTORS

Meets every 3rd Wednesday at 11:00am.
Meetings are open to all members.

Jim Brownfield, President
Nancy Blair, Vice President
Kelly Prinz, Secretary
Karen Sanner, Treasurer
John Lunn, Legal Advisor
Larry Wentz, Past President

Anne Anderson
Carl Drury
Sonja Hoffmann
Bob Kalish
William Reed
Bret Rice



BELL CHOIR

Bell Choir practice on **Wednesdays** at **9:00a**. If interested in joining Bell Choir, please contact Joyce Snyder at 740-653-4464.



BIBLE STUDY

Join the Bible Study group on **Wednesdays** at **9:45a**. New members welcome for fellowship.



THE "BOOKIES"

June brings Bookies to 'Firekeeper's Daughter,' by Angeline Boulley. On **Tuesday, June 17**, at **1:00p** we'll discuss this novel that centers on Daunis, half white, half Ojibwe, who lives in Michigan's Upper Peninsula. She is all set to go to college in Ann Arbor, but a family tragedy keeps her home looking after her fragile mother. When she witnesses a brutal murder, she agrees to go undercover to aid the FBI in rooting out the source of a lethal new drug using her knowledge of chemistry and native Anishinaabe medicine. Native traditions, their uneasy relations with white culture, and hockey, coexist in this engaging novel, soon to be on Netflix. Pick up your copy at the Fairfield Library Information Desk. Questions? Call Barb Ramsey at 740-653-3897. We are always ready to welcome new folks to our lively discussions!



COFFEE CLUB

Join us at **9:00a** on **Friday, June 6** to discuss the economy and other investment topics.

Contact Luann Snyder at 740-653-2308 for questions.



COIN CLUB

The Coin Club meets the **1st Tuesday** of each month at **3:00p**.

Members meet to discuss coin grading, coin values and to buy, sell and trade collectable coins. Contact Steve



MILITARY VETERANS OF OLIVEDALE

Our meeting will be on **June 2** at **1300 hours**. We will have our

★★★★★ first picnic of the year on **June 16**

at the Eagles shelter area on East Main Street. We **eat at noon**. June 27 is PTSD Awareness Day. June dates in military history: 6/6/1944 D-Day invasion; 6/14/1775 Army's birthday; 6/25/1950 start of the Korean War; 6/27/1953 end of the Korean War. All military veterans who are members of Olivedale Senior Center are welcome to attend our meetings. For information, call Bill Reed at **740-624-3604**. You can leave a voice message or send a text. Check us out at militaryveteransofolivedale.com on the web.

RAMBLING DESIGNERS GARDEN CLUB

Rambling Designers Garden Club will have the monthly road trip/

meeting on **WEDNESDAY June 4**. We will meet at Olivedale parking lot at **11:45 am**. Leave Olivedale at Noon, drive down and tour Adena Mansion & Gardens (about 1 hour) cost is \$5, then we will have more free time to walk in the garden.



THE SOMETIMERS

The Sometimers will meet at Olive Garden on **Friday, June 20**, at **12:00p** for lunch. Please let Bonnie Kistler know by Wednesday, June 16 about your attendance. We are a social group and are always looking for new members with whom to socialize! If you are interested in joining The Sometimers, contact the Olivedale office at 740-687-6655 for more information.





ARTIST HOUR

Join us **Mondays at 1:00p** to create and discuss art. Benefit from our members sharing demonstrations of techniques, use of materials and tools of art. All levels and any medium welcome.



CHAIR DANCING CLASS

Embrace the rhythm and flow of dance without the need to stand. This chair dancing class is tailored for those who have mobility, hip and knee issues or find it a challenge to stand for long periods while dancing. This class promises a fun, energetic start to your **Friday mornings at 9:00a**. Class is free!



CLOGGING CLASS

Clogging Class is every **Monday at 10:00a**. Cost is **\$2.00** per class. Beginners can receive extra help one hour before class at **9:00a**. Clogging is uniquely American incorporating Step, Jig and Rhythms made with the toe or heel. It's great exercise.



COUPLES DANCE CLASS

Class is **Fridays at 12:30p**. All skill levels welcome. This class will prepare you for social dancing at Olivedale. Fee is **\$5.00/person** per class collected by the instructors Dave and Diana. Attn: Gentlemen! We currently have a few ladies looking for a dance partner to attend class. It's time to unleash your inner "Fred Astaire"! No pre-registration needed.

HOOKS & NEEDLES

As a service project for 2025 we are making hats and scarves for the homeless. We will be making them throughout the year and donating them next fall. As always,



if you want to learn how to knit or crochet, if you need help with a pattern or if you just want to knit and crochet with friends come join us. We have experienced knitters and crocheters to help at any stage of your journey. We meet **Mondays at 10:00a**.



LINE DANCE

Classes for Olivedale members, all experience levels. Fee is **\$3/person** or **\$5/couple**. Join us **Tuesday, Wednesday and Friday at 10:00a** for beginners, or **11:00a** for more advanced dancers.



QUILT CHARMS

As usual, the ladies of "Quilt Charms" are staying very busy. June 26 we will come and sew all day together. We will be learning how to recycle the cardboard from a bolt of fabric into a lovely bag for rulers. We call this our "sew-in" day. Stop in anytime to see what we do. We have had several new members arriving in the past few weeks, but there's always room for more. We meet every **Thursday at 9:00a**.



TATTING

Tatting meets every **Monday at 10:00a**. Try this delicate needlework art form. Lessons provided for beginners.



WATER CLASSES

2nd Quarter Session. "All Inclusive" Pass and Registration required for pool classes.

Time	Monday	Tuesday	Wednesday	Thursday	Friday	Saturday
7:00a	Open Pool	Open Pool	Open Pool	Open Pool	Open Pool	Closed
8:00a	Silver Splash	Silver Splash	Silver Splash	Silver Splash	Silver Splash	Open Pool
9:00a	Aqua Challenge	Aqua Core	Aqua Challenge	Aqua Core	Aqua Challenge	Open Pool
10:00a	Light Aerobics	Arthritis	Light Aerobics	Arthritis	Light Aerobics	Open Pool
11:00a	Joints in Motion	Arthritis	Joints in Motion	Arthritis	Joints in Motion	Open Pool
12:00p	Open Pool	Open Pool	Open Pool	Open Pool	Open Pool	Close at 2:00p
1:00p	Water Workout	Aqua Aerobics	Water Workout	Aqua Aerobics	Water Workout	Closed
2:00p	Open Pool	Open Pool	Open Pool	Open Pool	Open Pool	Closed
3:00p	Open Pool	Open Pool	Open Pool	Open Pool	Open Pool	Closed
4:00p	Lap Swim	Lap Swim	Lap Swim	Lap Swim	Closed	Closed
5:00p	Open Pool	Aqua Blast	Open Pool	Aqua Blast	Closed	Closed
6:00p	Aqua Fit	Aqua Fit	Aqua Fit	Aqua Fit	Closed	Closed

Your source for quality fresh meats



BAY FOOD MARKET
Serving Lancaster Since 1932
Corner of S. Maple and Walnut
Lancaster's Only Home-Butchered Meats

Full Service fresh meat case featuring quality fresh beef, pork, gourmet burgers & brats
plus we carry a full line of groceries, including: bread, cereal, cheese, eggs, milk, juice, fresh fruits & vegetables, snacks, frozen food and more!


Mon-Sat 8am-6pm • Closed Thur & Sun
301 S. Maple St.
740-653-9606
www.BayFoodMarket.com
Become our fan on Facebook



LUXE
REHABILITATION & CARE CENTER

LANCASTER'S TOP CHOICE FOR
SKILLED NURSING, REHABILITATION
AND MEMORY CARE SERVICES

740/654-2634
957 Becks Knob Road • Lancaster, Ohio
www.crestviewrehab.com



WE APPRECIATE OUR ADVERTISERS!



THRIVE
LOCALLY



THE RIDGE
AT LANCASTER
a tradition of caring

(740) 681-9903
Respite Stay & Assisted Living
241 Whittier Dr. S | Lancaster, OH 43130
WWW.RDGLANCASTER.COM

In-Home Services for Seniors by Seniors
The Comfort of Home, Care from a Friend

Call us for an extra set of hands with housekeeping, shopping, meals, personal care and so much more.

NO JOB TOO SMALL

Let us lighten your load

25% off 1st Cleaning Project

Luxe Cleaning Company

(203) 286-3147  Book a Service
www.luxecleaningco.org
Lancaster, OH



Bringing Love into the Lives of Seniors with Dignity and Respect

Seniors Helping Seniors®

740-292-2949
MidOhioSeniorCare.com

We Hire Seniors!



WELLNESS CENTER ACTIVITIES

Page 06

HEALTH & FITNESS CENTER

HOURS:

Monday-Thursday
7:00am - 7:00pm

Friday
7:00am - 4:30pm

Saturday Summer Hours

8:00am - 12:00pm
(excluding holiday weekends)



Lancaster Parks & Recreation
Health & Fitness Center

Go to <https://lancasteroh.myrec.com>, log into your account to purchase a Health & Fitness membership pass on-line.

3rd Quarter 2025 Pool Registration

Registration for **Pool Classes** (Jul, Aug, Sep) starts **Monday, 6/23/2025**. First day of the quarter is June 30. To register, log into the LPR portal, stop by the office or call (740-687-6655) speak to an employee. **Do Not** leave a message. **Registration with "All Inclusive" membership or Medicare Insurance reimbursement enrollment** is required for all pool classes.

FITNESS ROOM EXERCISE

Current 45- 55 minute classes Available—No Registration Necessary

Time	Monday	Tuesday	Wednesday	Thursday	Friday	Saturday
7:30a		Spin w/Amy		Spin w/Amy		
8:00a	Morning Spin	8:15a Suspended Strength	Morning Spin	8:15a Suspended Strength		
8:30a					Buti Yoga	Zumba
9:00a	Chair Yoga Strength & Flexibility	Strength & Flexibility	Chair Yoga Strength & Flexibility	Strength & Flexibility	Yoga Stretch	
10:00a	Rock Steady Boxing	Zumba Gold	Rock Steady Boxing	Zumba Gold		Pilates Mobility
10:15a	Silver Sneakers		Silver Sneakers		Silver Sneakers	
11:00a	Cardio Drumming		11:05a Beginning Mat Yoga		Close at 4:30p	Close at 12:00p
5:00p	Barre Fit Pound	Old School Step	Pilates	Buti Yoga		
6:00p	Yoga Spin & Sculpt	Yoga Stretch	Cardio Drumming	Muscle Madness Yoga		

LPR Health & Fitness Center

Monthly Membership Pass Options (*Member must have current Olivedale Senior Membership)


Membership Pass	Pass Details	30 days	60 days	90 days
*Olivedale Senior Basic (code required)	Gym only	\$10	\$20	\$30
*Olivedale Senior Basic Plus (code required)	Gym, Exercise & Open Pool	\$20	\$40	\$60
*Olivedale Senior All Inclusive (code required) (NOT FOR SilverSneakers/Renew Active/Silver&Fit members.)	Gym, Exercise, Open Pool & Pool Classes. See Pass Changes in Yellow			\$72
Basic	Gym only	\$12	\$24	\$36
Basic Plus	Gym, Exercise & Open Pool	\$22	\$44	\$66
All Inclusive (NOT FOR SilverSneakers/Renew Active/Silver&Fit members.)	Gym, Exercise, Open Pool & Pool Classes. See Pass Changes in Yellow			\$78

LPR Health & Fitness Center : Closed June 19

Saturday Summer Hours 8am-12pm

Reminder: If you are taking a pool class you **MUST** be registered for classes. No exceptions.

JUNE 2025 CALENDAR

SUN	MON	TUE	WED	THU	FRI	SAT
1	2	3	4	5	6	7
	9:00a Woodcarvers 10:00a Tatting 10:00a Clogging 10:00a Hooks & Needles 1:00p Artists Hour 1:00p Rummikub 1:00p Veterans 1:00p Downsizing Seminar 5:30p Line Dance	9:00a Ping Pong 10:00a Beg. Line Dance 11:00a Adv. Line Dance 1:00p Dominos 1:00p Cards/Games 1:00p Euchre 3:00p Coin Club	9:00a Bell Choir 9:45a Bible Study 10:00a Beg. Line Dance 11:00a Adv. Line Dance 11:15a Lunch Bunch @ Barrel & Boar BBQ 11:45a Rambling Designers @ Adena Mansion 1:00p Euchre	9:00a Quilt Charms 9:00a Ping Pong 1:00p Mahjong 1:00p Bingo 1:00p Cards/Games	Deadline Jul Newsletter 9:00a Coffee Club 9:00a Woodcarvers 9:00a Chair Dancing 10:00a Beg. Line Dance 11:00a Adv. Line Dance 12:30p Couple Dance	
8	9	10	11	12	13	14
	9:00a Woodcarvers 10:00a Tatting 10:00a Clogging 10:00a Hooks & Needles 1:00p Artists Hour 1:00p Rummikub 1:00p Memory Care Seminar 5:30p Line Dance	9:00a Ping Pong 10:00a Beg. Line Dance 11:00a Adv. Line Dance 11:30a - 12:30p 2nd Tuesday 1:00p Dominos 1:00p Cards/Games 1:00p Euchre	9:00a Bell Choir 9:45a Bible Study 10:00a Beg. Line Dance 11:00a Adv. Line Dance 11:15a Lunch Bunch @ Papitos (Baltimore) 1:00p Euchre	9:00a Quilt Charms 9:00a Ping Pong 1:00p Mahjong 1:00p Bingo 1:00p Cards/Games	9:00a Woodcarvers 9:00a Chair Dancing 10:00a Beg. Line Dance 11:00a Adv. Line Dance 12:30p Couple Dance	DANCE TONIGHT 7:00p - 10:00p Alexander Band 
15	16	17	18	19	20	21
	9:00a Woodcarvers 10:00a Tatting 10:00a Clogging 10:00a Hooks & Needles 12:00p Veterans Picnic @ Eagles Shelter 1:00p Artists Hour 1:00p Rummikub 5:30p Line Dance	9:00a Ping Pong 10:00a Beg. Line Dance 11:00a Adv. Line Dance 1:00p Dominos 1:00p Cards/Games 1:00p Euchre 1:00p Bookies	9:00a Bell Choir 9:45a Bible Study 10:00a Beg. Line Dance 11:00a Adv. Line Dance 11:15a Lunch Bunch @ Los Amigos 1:00p Euchre	Olive dale Closed 	9:00a Woodcarvers 9:00a Chair Dancing 10:00a Beg. Line Dance 11:00a Adv. Line Dance 12:00p Sometimes @ Olivegarden 12:30p Couple Dance First Day of Summer	
22	23	24	25	26	27	28
	NL Folding 9:00a Woodcarvers 10:00a Tatting 10:00a Clogging 10:00a Hooks & Needles 1:00p Artists Hour 1:00p Rummikub 5:30p Line Dance	9:00a Ping Pong 10:00a Beg. Line Dance 11:00a Adv. Line Dance 1:00p Dominos 1:00p Cards/Games 1:00p Euchre	9:00a Bell Choir 9:45a Bible Study 10:00a Beg. Line Dance 11:00a Adv. Line Dance 11:15a Lunch Bunch @ Wang's Garden Chinese 1:00p Euchre	9:00a Quilt Charms 9:00a Ping Pong 1:00p Mahjong 1:00p Bingo 1:00p Cards/Games	9:00a Woodcarvers 9:00a Chair Dancing 10:00a Beg. Line Dance 11:00a Adv. Line Dance 12:30p Couple Dance	DANCE TONIGHT 7:00p - 10:00p TNT 
29	30					
	9:00a Woodcarvers 10:00a Tatting 10:00a Clogging 10:00a Hooks & Needles 1:00p Artists Hour 1:00p Rummikub 5:30p Line Dance					

July NEWSLETTER REMINDER

Deadline Friday, June 6, 2025 Newsletter folding Monday, June 23, 2025.

LUNCH BUNCH

June 4 Wed. - **11:15a** Barrel & Boar BBQ
June 11 Wed. - **11:15a** Papitos (Baltimore)
June 18. - **11:15a** Los Amigos
June 25 - **11:15a** Wang's Garden Chinese
Please call Kathy at 440-655-9416 to be added to the reservation list. For out of town lunches, meet in the Olivedale lower parking lot by 10:30a to carpool.

OLIVEDALE WOODCARVERS

The Woodcarvers meet every Monday & Friday at **9:00a.** On the first Monday of every month they will offer a free beginners carving class. If you have questions, please contact Steve at 740-331-3100, Jacque at 740-687-4729 or Ray at 740-438-9624.



WELCOME NEW MEMBERS

Joan Bond
Julie Burchett
James Calandra
Larry Capitini
David & Brenda Clarridge
Kathy Cline
Julie Fletcher
Linda Hartley
Teg Lantz

Emilia Marchese
Gina Pressler
Ned & Gail Spangler



As of May 14, 2025

IN MEMORY



Gary Boch
Joanna Van Gundy
Bob Krile
Max Wildermuth

Key Beth Warthman
REALTY
740.974.8064
Beth Warthman helps you move in the right direction
539 E. Main St.
Lancaster, OH 43130
ewarthman@gmail.com
bethwarthmansells.com

SUPPORT OUR ADVERTISERS!

FAIRHOPE
HOSPICE & PALLIATIVE CARE
HOME OF THE PICKERING HOUSE
740-654-7077
800-994-7077
fairhopehospice.org
f t i n y

Become a Volunteer!

Live Like Ohio Royalty!

KINGSBURY
SENIOR LIVING
Coming Soon!
INDEPENDENT LIVING • ASSISTED LIVING • MEMORY CARE
1572 Timbertop St.
Lancaster, OH 43130
(740) 785-7903
LiveKingsbury.com
Pet Friendly

BILLIARDS CLUB

The billiard tables are available to all Olivedale Senior members during Olivedale hours.

BINGO - THURSDAY 1:00P - \$1.50

Enjoy a variety of styles of bingo.

BRIDGE - TUESDAY

If you would like to join us at the bridge table on Tuesdays or if you need a refresher contact Marty at 740-777-7080 for details.

CARDS/GAMES - TUESDAY & THURSDAY 1:00P

Card tables will be available for any game of choice.

DOMINOS - TUESDAY 1:00P

AMERICAN & CHINESE MAHJONGG - THURSDAY 1:00P (ALL SKILL LEVELS WELCOME)

Join us Thursday afternoons at 1:00p for a game of Mah Jongg. We welcome players of all skill levels and are happy to teach the American or Chinese version to new players. For more information contact Cathy at 740-652-0206.

PINOCHLE - TUESDAY & THURSDAY 1:00P

We are looking for players to join our Pinochle card group. If interested, please call the office at 740-687-6655.

PING PONG - TUESDAY & THURSDAY 9:00A

All experience levels welcome.

PROGRESSIVE EUCHRE - TUESDAY & WEDNESDAY AT 1:00P - \$1.50


No partner needed.

RUMMIKUB - MONDAY 1:00P

A tile-based game for 2 - 4 players, combining elements of the card game rummy and mahjong.

Games are free to all members unless noted.





Medicare Questions?
Let us help find the right plan for YOU!

- Medicare Advantage Plans
- Medicare Supplements
- Medicare Drug Plans
- Final Expense Insurance

Jeff Richardson
740-404-2631

Lynn Richardson
740-405-6631

Your local, licensed Medicare Specialists
www.BothHandsFG.com

BOTH HANDS FINANCIAL GROUP



Halteman-Fett-Dyer
FUNERAL HOME & MEMORIALS
"Serving All Faiths"

436 NORTH BROAD STREET
LANCASTER, OH 43130

740-653-302 | A.J. DYER, MANAGER



Trusted In-Home Care

Live life your way! From a few hours to 24/7 care, we're there when and where you need us.

Personal Care, Housekeeping, Companionship and More!

740-689-9410
homehelpershomecare.com/lancaster

Each office is independently owned & operated

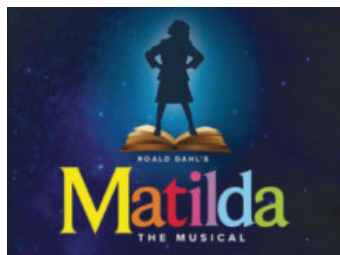
LET'S GROW YOUR BUSINESS
Advertise in our Newsletter!

CONTACT ME
Maureen Weber

mweber@4LPi.com
(800) 477-4574 x6021

Day Trips

Sign Up Today! Olivedale Day Trips are Non-Refundable.

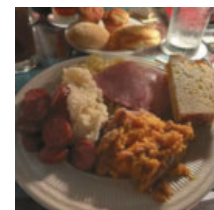


LaComedia ~ Springboro, OH

Matilda is a little girl with astonishing wit, intelligence, and special powers. She's unloved by her cruel parents but impresses her school

teacher, Miss Honey, who recognizes her extraordinary personality. The school's mean headmistress, however, hates children and loves to punish those who don't abide by her rules. But Matilda has courage and cleverness in equal amounts and could be the students' saving grace! Packed with high-energy dance numbers and catchy songs, children and adults

alike will be thrilled and delighted by the story of the special little girl with an extraordinary imagination. Travel to LaComedia on **Friday, July 11. Departing at 8:15a and returning at approximately 5:30p. \$86.00** includes travel, dinner and show (not gratuity).



Vacation Trips



See the Olivedale office for vacation brochures. For reservations or questions please contact Sally Sutter at 740-407-2157 or mermaidtravel@gmail.com

CANADIAN ROCKIES & GLACIER NAT'L. PARK— Departure meeting 7/9/2025 2p

Includes: Lake Louise - Banf - Head-Smashed-In Buffalo Jump - Going to the Sun Highway - Icefields Parkway & much more!

**7/16/25—7/23/25
\$4475/person**

CAPE COD & MARTHA'S VINEYARD—Departure meeting 8/27/2025 2p

Highlights: JFK Museum, guided tours of the "Outer Cape" and historic seaside Towns of Hyannis and Sandwich, escorted visit to Martha's Vineyard and a stop at Foxwoods Casino and Resort!

**9/7/25-9/13/25
\$1009/person**

CLASSIC GREECE—.....11/9/25—11/19/25

Explore the wonders of Athens, Delphi, Olympia and beyond!

\$3899/person

BILTMORE ESTATE & ASHEVILLE, NC—.....11/17/25—11/20/25

View the Blue Ridge Mountains, Grand Victorian architecture, The Blue Ridge Parkway Visitor and One of the Biltmore's many gardens.

\$717/person

COMING SOON!

SWISS ALPS VILLAGES & TRAINS—Presentation meeting 7/9/2025 3p



Come Dance with Us!

(Unless Otherwise Noted) OPEN TO THE PUBLIC (MUST BE 18 OR OLDER).
ADMISSION **\$5**. NO Carry-In Refreshments - Dinner Menu, Refreshments
and Drinks Available for Purchase. Doors Open 6:00p ~ Dance 7:00p—
10:00p. Change is limited. Please pay with smaller currency.
NO RESERVED TABLES. Tables are first come first serve.

**SATURDAY,
JUNE 14TH**

Alexander Band



VARIETY DANCE MUSIC

Saturday, June 28

T.N.T.



Round, Line & Square Dancing

VOLUNTEERS NEEDED



Did you miss the "Groovy"
Volunteer Lunch? Don't miss
next year's fun. Contact the
office for volunteer
opportunities and
join our volunteer family!

MAY QUICKCROSS ANSWERS:

B	E	A	T
U	C	L	A
S	H	A	M
H	O	N	E

NEVER MISS OUR NEWSLETTER!

SUBSCRIBE

Have our newsletter
emailed to you.



VISIT **WWW.MYCOMMUNITYONLINE.COM**

CONTACT US

Olivedale Senior Citizens of Fairfield County

253 Boving Road
Lancaster, OH 43130-4240
740-687-6655

email: staff@olivedale.com
www.olivedale.com



Olivedale Senior Citizens of FC

Business Office Hrs: 8:00a-5:00p M-TH
8:00a-4:30p F



Non-Profit Organization
U.S. Postage Paid
Permit 57
Lancaster, OH 43130

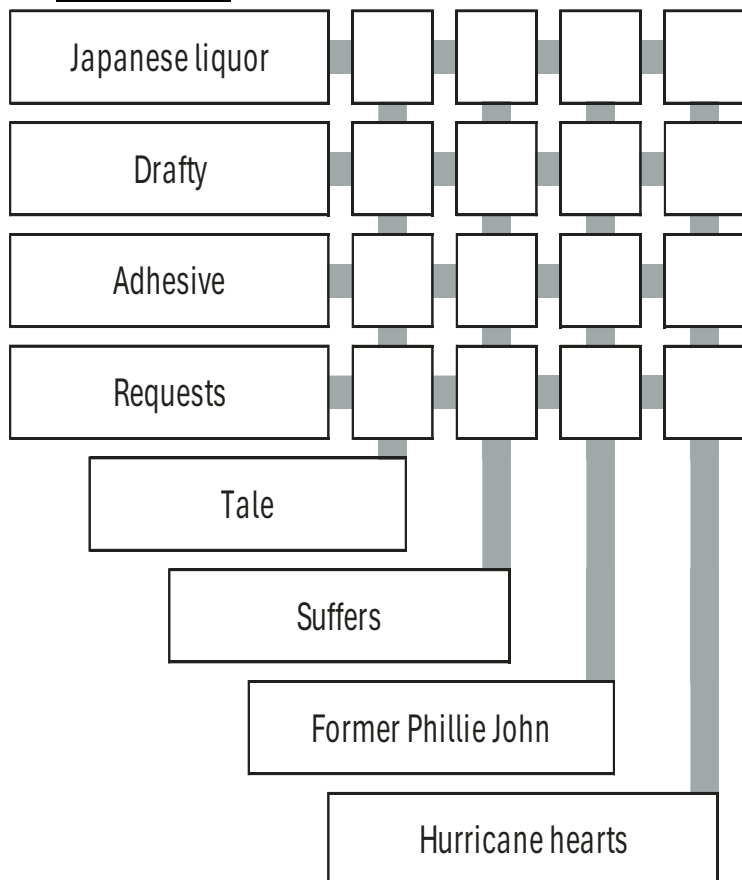
EXPIRATION REMINDER

A-D Expires Apr 1

\$24 Per Person Per Year

PUZZLE OF THE MONTH

QuickCross™



LOOKING AHEAD



The annual Member
Ice Cream Social is

Thursday, July 17
from 5:00p—6:00p.

Tickets required again
this year. "A balanced diet is having an
ice cream cone in each hand!"



The Lancaster Festival

Orchestra String Quartet
will bring enchanting
melodies to Olivedale on **Wednesday,**
July 30 at 1:00p as part of the festival's
Out & About series. The performance
offers an experience of world-class
musicianship in an intimate setting.
Expect a captivating blend of classical
and contemporary pieces, making for a
delightful afternoon of music and
community engagement.

