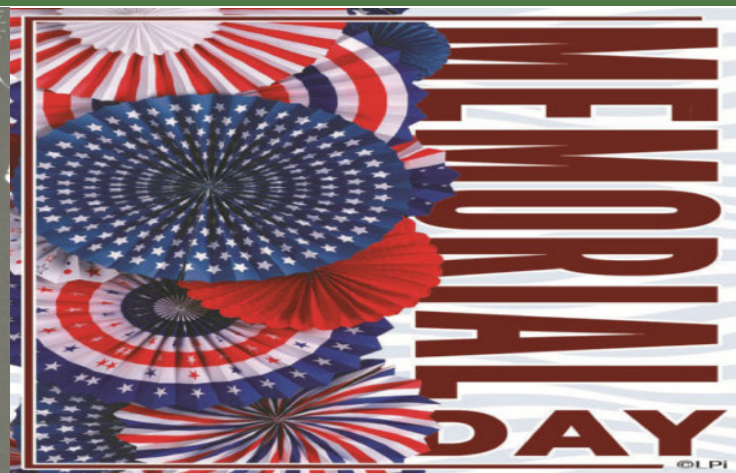




The Oak Leaf

The Monthly Newsletter of Olivedale Senior Center

MAY 2025 | VOLUME 53, ISSUE 5



Aging In Place

An engaging and informative seminar on Aging in Place! Join us **Monday, May 5, at 1:00p** at **Olivedale**, where we'll explore strategies to empower seniors to continue living comfortably and independently in their homes. This seminar will feature insights from **4 outstanding local senior agencies**—(Olivedale, The Hub/Meals on Wheels Fairfield County, Home Helpers and CareTenders) each bringing their expertise and innovative ideas to support aging in place effectively. Whether you're planning for your future or helping a loved one, this session is designed to provide valuable tips and guidance.



Plant Sale

The Rambling Designers annual Plant Sale will be held at Olivedale **Wednesday, May 14** starting at **10:00a** until 12:00p or all the plants are gone. Come early for the best selection.



Health Fair

The Annual Olivedale Senior Health Fair is **Friday, May 16 from 11:00a—1:00p**. The first 200 seniors will receive a free lunch and T-shirt. Come for a day focused on senior wellness! Get your blood pressure, blood oxygen, and glucose checked, and connect with local senior resources of home health, short and long term health, assisted living, memory care, financial, legal and Medicare for a healthier you. Don't miss this opportunity to take charge of your health in a supportive and welcoming environment. This health fair is possible through a grant from The Hub/Meals on Wheels of Fairfield County.



REMINDER

Tuesday, May 6 is an election day in Ohio. Olivedale is a precinct and parking may be more difficult on this day. Please pack your patience and kindness to bring with you that day. Thank you.

OUR MISSION

To provide an atmosphere for friendships and feeling of connection with others for senior citizens of the community, learning through educational and recreational opportunities, promote wellness and social activities that encourage service to the senior center and entire community.

Park Events

Olivedale Park

Mondays 5:30p Line Dance Class. All ages (accompanied by an adult) held at Olivedale \$4 /class.

Alley Park

5/2/25 Park, Afterdark Program 7-9p register online

5/14/25 Wise Walkers Senior Hiking Group 9-11a Mambourg Park details on lancasterparks.com

5/18/25 Wildflower Hike 2-4p Meet in front parking lot

Tiki Pool Opens 5/24/25

Miller Pool Opens 5/31/25

Friday Night Bandstand

5/30/25 - 6p opening act:

Mathew Adams

7p Headliner: Bad Influence

Like us on Facebook:

[Lancasterparksandrecreationdepartment](https://www.facebook.com/Lancasterparksandrecreationdepartment)

To sign into the LPR portal go to: <https://lancasteroh.myrec.com>



2nd Tuesday Lunch

Join us on **Tuesday, May 13**

for our 2nd Tuesday Lunch. Menu includes chicken & noodles, mashed potatoes, lima beans,



salad, rolls with butter and pineapple & mandarin orange cake for dessert (coffee or iced tea included). Open to all Olivedale Senior members.

Serving is from **11:30a—12:30p**.

Cost is **\$8**. Reservations and payment must be made by **Friday, May 9**.



Silver Spoon Thursdays

8:00a—10:00a

Please pay cashier for ticket. Open to the public.

\$6



Menu choice:

#1 every Thursday: **Waffle**, sausage or bacon, 1 juice serving, and coffee/tea



#2 every other Thursday: **Biscuit sandwich (w/ egg, cheese, sausage, or bacon)**, hash brown, 1 juice serving, and coffee/ tea.



#3 every other Thursday: **Biscuits & gravy**, hash brown, 1 juice serving, and coffee/tea.



POP Purchases



A pop machine is provided for public use at Olivedale located in the lower level and available for everyone to access beverages safely and conveniently. This eliminates the need to enter staff-only areas, such as the walk-in cooler, to retrieve items like pop. It is important to note that accessing the walk-in cooler requires ServeSafe certification or equivalent training, as it involves entering a food storage area where safety, hygiene, and food handling standards must be upheld. Using the public pop machine ensures compliance with health and safety regulations and maintains integrity of Olivedale's operation. Therefore, pop will not be sold from the kitchen or office other than dance nights.

ABOUT US

Olivedale Senior Center is a part of Lancaster Parks & Recreation

Steve Gayfield, *Superintendent of Parks*
Carla Young, *Park Supervisor*

The elected Board of Directors represent the members of Olivedale. They welcome questions and comments from all members. Please feel free to approach any of the listed Directors to express your concerns or write them down and leave them at the office. If you are not sure how to get in touch with a board member, please ask the front desk.

BOARD OF DIRECTORS

Meets every 3rd Wednesday at 11:00am.
Meetings are open to all members.

Jim Brownfield, President
Nancy Blair, Vice President
Kelly Prinz, Secretary
Karen Sanner, Treasurer
John Lunn, Legal Advisor
Larry Wentz, Past President

Anne Anderson
Carl Drury
Sonja Hoffmann
Bob Kalish
William Reed
Bret Rice



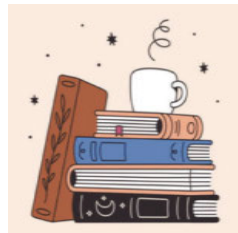
BELL CHOIR

Bell Choir practice on **Wednesdays** at **9:00a**. If interested in joining Bell Choir, please contact Joyce Snyder at 740-653-4464.



BIBLE STUDY

Join the Bible Study group on **Wednesdays** at **9:45a**. New members welcome for fellowship.



THE "BOOKIES"

Bookies members will travel far afield on **Tuesday, May 20** at **1:00p** when we chat about 'Erotic Stories of Punjabi Widows,' by Balli Kaur

Jaswal. Modern woman Nikki, who has spent much of her life distancing herself from her family's traditional Punjabi Sikh lifestyle. After her father's death, she needs work and takes a job teaching creative writing to older Punjabi widows. It doesn't go well initially, because these lost and lonely ladies simply expect English literacy classes. But then, one student brings in a book of erotic stories to class. Nikki begins helping these women become creative, confident and outgoing by telling their own stories. Come explore the culture and mores of India with us! Get your book club kit book at the Fairfield Library Information Desk. Questions? Call Barb Ramsey at 740-653-3897.



COFFEE CLUB

Join us at **9:00a** on **Friday, May 2** to discuss the economy and other investment topics. Contact Luann Snyder at

740-653-2308 for questions.



COIN CLUB

The Coin Club meets the **1st Tuesday** of each month at **3:00p**. Members meet to discuss coin grading, coin

values and to buy, sell and trade collectable coins. Contact Steve Tedrick at 740-654-8831 for further information about the club or coin collecting questions. New members always welcome.



MILITARY VETERANS OF OLIVEDALE

Our meetings will be on **May 5th and 19th at 1300 hours**. May is

★★★★★ National Military Appreciation Month. Monday, **May 26th** is **Memorial Day**. We will have our trailer in the parade. Meet at the corner of West Mulberry and Columbus Streets at 1000 hours to assemble the trailer. The parade starts at 1030 hours. May dates in military history: 5/7/1945 Germany surrenders to end WWII; 5/8/1945 Victory in Europe Day; 5/16/1908 the Navy Nurse Corp is established. All military veterans who are members of Olivedale Senior Center are welcome to attend our meetings. For information, call Bill Reed at **740-624-3604**. You can leave a voice message or send a text. Check us out at militaryveteransofolivedale.com.

RAMBLING DESIGNERS GARDEN CLUB

The Annual Rambling Designer's Plant sale is **May 14th** from **10:00a-12:00p**. Gardeners

come get the plants you want and need! Set up is on the morning of the sale starting at **8:30a**.



THE SOMETIMERS

The Sometimers will meet at Olivedale Senior Center on **Friday, May 16th**. A very informal get-together will take place at **1:00p** to finalize the yearly meeting. The change of time will allow you to attend the Health Fair at Olivedale prior to our meeting. Please let Bobbie Wentz know by Wednesday, May 14th on your attendance.





ARTIST HOUR

Join us **Mondays at 1:00p** to create and discuss art. Benefit from our members sharing demonstrations of techniques, use of materials and tools of art. All levels and any medium welcome.



CHAIR DANCING CLASS

Embrace the rhythm and flow of dance without the need to stand. This chair dancing class is tailored for those who have mobility, hip and knee issues or find it a challenge to stand for long periods while dancing. This class promises a fun, energetic start to your **Friday mornings at 9:00a**. Class is free!



CLOGGING CLASS

Clogging Class is every **Monday at 10:00a**. Cost is **\$2.00** per class. Beginners can receive extra help one hour before class at **9:00a**. Clogging is uniquely American incorporating Step, Jig and Rhythms made with the toe or heel. It's great exercise.



COUPLES DANCE CLASS

Class is **Fridays at 12:30p**. All skill levels welcome. Please have a partner you're comfortable dancing with. This class will prepare you for social dancing at Olivedale. Fee is **\$5.00/person** per class collected by the instructors Dave and Diana. May 16th class will be at 1:00p.

HOOKS & NEEDLES

As a service project for 2025 we are making hats and scarves for the homeless. We will be making them throughout the year and donating them next fall. As always, if you want to learn how to knit or crochet, if you need help with a pattern or if you just



want to knit and crochet with friends come join us. We have experienced knitters and crocheters to help at any stage of your journey. We meet **Mondays at 10:00a**.



LINE DANCE

Classes for Olivedale members, all experience levels. Fee is **\$3/person** or **\$5/couple**. Join us **Tuesday, Wednesday and Friday at 10:00a** for beginners, or **11:00a** for more advanced dancers. No classes on May 16th.



QUILT CHARMS

April 6th through 9th Our annual retreat, held in Amish country, was tons of fun! I wonder who bought the most fabric. At the end of March we were contacted by the VA hospital in Chillicothe because they were in need of quilts for the Veterans there. So, we sent down 10 more quilts, along with several pillowcases, on April 3rd. We will be going down there to drop off quilts again at the end of May. I can't wait to see how many we will have by then. If you'd like to help us make these quilts, there's tons of ways to help out without making an entire quilt. Want to learn how? We'll teach you everything you need to know. Come join us for our meetings! Our group meets every **Thursday at 9:00a-11:00a**.



TATTING

Tatting meets every **Monday at 10:00a**. Try this delicate needlework art form. Lessons provided for beginners.



WATER CLASSES

2nd Quarter Session. "All Inclusive" Pass and Registration required for pool classes.

Time	Monday	Tuesday	Wednesday	Thursday	Friday	Saturday
7:00a	Open Pool	Open Pool	Open Pool	Open Pool	Open Pool	Closed
8:00a	Silver Splash	Silver Splash	Silver Splash	Silver Splash	Silver Splash	Open Pool
9:00a	Aqua Challenge	Aqua Core	Aqua Challenge	Aqua Core	Aqua Challenge	Open Pool
10:00a	Light Aerobics	Arthritis	Light Aerobics	Arthritis	Light Aerobics	Open Pool
11:00a	Joints in Motion	Arthritis	Joints in Motion	Arthritis	Joints in Motion	Open Pool
12:00p	Open Pool	Open Pool	Open Pool	Open Pool	Open Pool	Close at 12:00p
1:00p	Water Workout	Aqua Aerobics	Water Workout	Aqua Aerobics	Water Workout	Closed
2:00p	Open Pool	Open Pool	Open Pool	Open Pool	Open Pool	Closed
3:00p	Open Pool	Open Pool	Open Pool	Open Pool	Open Pool	Closed
4:00p	Lap Swim	Lap Swim	Lap Swim	Lap Swim	Close at 4:30p	Closed
5:00p	Open Pool	Aqua Blast	Open Pool	Aqua Blast	Closed	Closed
6:00p	Aqua Fit	Aqua Fit	Aqua Fit	Aqua Fit	Closed	Closed

**Your source
for quality fresh meats**



**Full Service fresh meat case
featuring quality fresh beef,
pork, gourmet burgers & brats**

plus we carry a full line of
groceries, including: bread,
cereal, cheese, eggs, milk,
juice, fresh fruits & vegetables,
snacks, frozen food and more!

Mon-Sat 8am-6pm • Closed Thur & Sun

**301 S. Maple St.
740-653-9606**

www.BayFoodMarket.com

Become our fan on Facebook



LANCASTER'S TOP CHOICE FOR
SKILLED NURSING, REHABILITATION
AND MEMORY CARE SERVICES

740/654-2634

957 Becks Knob Road • Lancaster, Ohio

www.crestviewrehab.com



**Visit our
Research Library
Volunteers
available to help
with your family
history**

(740) 653-2573
Hours 10-4 MTWF

**Ohio Genealogical Society -
Fairfield Chapter**

503 Lenwood Dr. • Lancaster OH 43130
fairfieldgenealogy.org

**THRIVE
LOCALLY**



**THE RIDGE
AT LANCASTER**

a tradition of caring

(740) 681-9903

Respite Stay & Assisted Living

241 Whittier Dr. S | Lancaster, OH 43130

WWW.RDGLANCASTER.COM

**In-Home Services
for Seniors by Seniors**

The Comfort of Home, Care from a Friend

*Call us for an extra set of hands with housekeeping,
shopping, meals, personal care and so much more.*

*Bringing Love into the Lives of Seniors with
Dignity and Respect*



Seniors Helping Seniors®

740-292-2949

MidOhioSeniorCare.com

**We Hire
Seniors!**

WE APPRECIATE OUR ADVERTISERS!

They allow us to print
this bulletin. Thank you!

WELLNESS CENTER ACTIVITIES

Page 06

HEALTH & FITNESS CENTER

HOURS:

Monday-Thursday
7:00am - 7:00pm

Friday
7:00am - 4:30pm

Saturday Summer Hours

8:00am - 12:00pm
(excluding holiday weekends)



Lancaster Parks & Recreation
Health & Fitness Center

Go to <https://lancasteroh.myrec.com>, log into your account to purchase a Health & Fitness membership pass on-line.

2nd Quarter 2025 Pool Registration

Registration for **Pool Classes** (Apr, May, Jun) started **Monday, 3/24/2025**. First day of the quarter was March 31. To register, log into the LPR portal, stop by the office or call (740-687-6655) speak to an employee. **Do Not** leave a message. **Registration with "All Inclusive" membership or Medicare Insurance reimbursement enrollment** is required for all pool classes.

FITNESS ROOM EXERCISE

Current 45- 55 minute classes Available—No Registration Necessary

Time	Monday	Tuesday	Wednesday	Thursday	Friday	Saturday
7:30a		Spin w/Amy		Spin w/Amy		
8:00a	Morning Spin	8:15a Suspended Strength	Morning Spin	8:15a Suspended Strength		
8:30a					Buti Yoga	Zumba
9:00a	Chair Yoga Strength & Flexibility	Strength & Flexibility	Chair Yoga Strength & Flexibility	Strength & Flexibility	Yoga Stretch	
10:00a	Rock Steady Boxing	Zumba Gold	Rock Steady Boxing	Zumba Gold		Pilates Mobility
10:15a	Silver Sneakers		Silver Sneakers		Silver Sneakers	
11:00a	Cardio Drumming		11:05a Beginning Mat Yoga		Close at 4:30p	Close at 12:00p
5:00p	Barre Fit Pound	Old School Step	Pilates	Buti Yoga		
6:00p	Yoga Spin & Sculpt	Yoga Stretch	Cardio Drumming	Muscle Madness Yoga		

LPR Health & Fitness Center

Monthly Membership Pass Options (*Member must have current Olivedale Senior Membership)

Membership Pass	Pass Details	30 days	60 days	90 days
*Olivedale Senior Basic (code required)	Gym only	\$10	\$20	\$30
*Olivedale Senior Basic Plus (code required)	Gym, Exercise & Open Pool	\$20	\$40	\$60
*Olivedale Senior All Inclusive (code required) (NOT FOR SilverSneakers/Renew Active/Silver&Fit members.)	Gym, Exercise, Open Pool & Pool Classes. See Pass Changes in Yellow			\$72
Basic	Gym only	\$12	\$24	\$36
Basic Plus	Gym, Exercise & Open Pool	\$22	\$44	\$66
All Inclusive (NOT FOR SilverSneakers/Renew Active/Silver&Fit members.)	Gym, Exercise, Open Pool & Pool Classes. See Pass Changes in Yellow			\$78

LPR Health & Fitness Center : May 24 & May 26 Saturday Summer Hours 8am-12pm

Reminder: If you are taking a pool class you **MUST** be registered for classes. No exceptions.

MAY 2025 CALENDAR

SUN	MON	TUE	WED	THU	FRI	SAT
				1	2	3
				8:00a - 10:00a Silver Spoon 9:00a Quilt Charms 9:00a Ping Pong 1:00p Mahjong 1:00p Bingo 1:00p Cards/Games	Deadline Jun Newsletter 9:00a Coffee Club 9:00a Woodcarvers 9:00a Chair Dancing 10:00a Beg. Line Dance 11:00a Adv. Line Dance 12:30p Couple Dance	DANCE TONIGHT 7:00p - 10:00p Willow Creek 
4	5	6	7	8	9	10
	9:00a Woodcarvers 10:00a Tatting 10:00a Clogging 10:00a Hooks & Needles 1:00p Artists Hour 1:00p Rummikub 1:00p Veterans 1:00p Aging in Place Seminar 5:30p Line Dance	9:00a Ping Pong 10:00a Beg. Line Dance 11:00a Adv. Line Dance 1:00p Dominos 1:00p Cards/Games 1:00p Euchre 3:00p Coin Club 	9:00a Bell Choir 9:45a Bible Study 10:00a Beg. Line Dance 11:00a Adv. Line Dance 11:15a Lunch Bunch @ Tiberios 1:00p Euchre 5:00p Bowling Bqt. 	8:00a - 10:00a Silver Spoon 9:00a Quilt Charms 9:00a Ping Pong 1:00p Mahjong 1:00p Bingo 1:00p Cards/Games	9:00a Woodcarvers 9:00a Chair Dancing 10:00a Beg. Line Dance 11:00a Adv. Line Dance 12:30p Couple Dance	
11	12	13	14	15	16	17
	9:00a Woodcarvers 10:00a Tatting 10:00a Clogging 10:00a Hooks & Needles 1:00p Artists Hour 1:00p Rummikub 5:30p Line Dance	9:00a Ping Pong 10:00a Beg. Line Dance 11:00a Adv. Line Dance 11:30a - 12:30p 2nd Tuesday 1:00p Dominos 1:00p Cards/Games 1:00p Euchre	9:00a Bell Choir 9:45a Bible Study 10:00a Beg. Line Dance 10:00a Plant Sale  11:00a Adv. Line Dance 11:15a Lunch Bunch @ Applebee's 1:00p Euchre	8:00a - 10:00a Silver Spoon 9:00a Quilt Charms 9:00a Ping Pong 1:00p Mahjong 1:00p Bingo 1:00p Cards/Games	9:00a No Woodcarvers 9:00a Chair Dancing Annual Health Fair 11:00a - 1:00p  Empowering Seniors for a Healthier Tomorrow 1:00p Sometimes 1:00p Couples Dance	DANCE TONIGHT 7:00p - 10:00p DJ Todd 
18	19	20	21	22	23	24
	9:00a Woodcarvers 10:00a Tatting 10:00a Clogging 10:00a Hooks & Needles 1:00p Artists Hour 1:00p Rummikub 1:00p Veterans 5:30p Line Dance	9:00a Ping Pong 10:00a Beg. Line Dance 11:00a Adv. Line Dance 1:00p Dominos 1:00p Cards/Games 1:00p Euchre 1:00p Bookies	9:00a Bell Choir 9:45a Bible Study 10:00a Beg. Line Dance 11:00a Adv. Line Dance 11:15a Lunch Bunch @ Pearl's (Logan) 1:00p Euchre	8:00a - 10:00a Silver Spoon 9:00a Quilt Charms 9:00a Ping Pong 1:00p Mahjong 1:00p Bingo 1:00p Cards/Games	9:00a Woodcarvers 9:00a Chair Dancing 10:00a Beg. Line Dance 11:00a Adv. Line Dance 12:30p Couple Dance	
25	26	27	28	29	30	31
	Olive Dale Closed 	NL Folding 9:00a Ping Pong 10:00a Beg. Line Dance 11:00a Adv. Line Dance 1:00p Dominos 1:00p Cards/Games 1:00p Euchre 1:00p Bookies	9:00a Bell Choir 9:45a Bible Study 10:00a Beg. Line Dance 11:00a Adv. Line Dance 11:15a Lunch Bunch @ Buffalo Wild Wings 1:00p Euchre	8:00a - 10:00a Silver Spoon 9:00a Quilt Charms 9:00a Ping Pong 1:00p Mahjong 1:00p Bingo 1:00p Cards/Games	9:00a Woodcarvers 9:00a Chair Dancing 10:00a Beg. Line Dance 11:00a Adv. Line Dance 12:30p Couple Dance	DANCE TONIGHT 7:00p - 10:00p The Blue Jean Band 

June NEWSLETTER REMINDER

Deadline Friday, May 2, 2025 Newsletter folding Tuesday, May 27, 2025.

LUNCH BUNCH

May 7 Wed. - **11:15a** Tiberios

May 14 Wed. - **11:15a** Applebee's

May 21 Wed. - **11:15a** Pearl's (Logan)

May 28 Wed. - **11:15a** Buffalo Wild Wings

Please call Kathy at 440-655-9416 to be added to the reservation list. For out of town lunches, meet in the Olivedale lower parking lot by 10:30a to carpool.



OLIVEDALE WOODCARVERS

The Woodcarvers meet every Monday & Friday at **9:00a**. On the first Monday of every month they will offer a free beginners carving class. If you have questions, please contact Steve at 740-331-3100, Jacque at 740-687-4729 or Ray at 740-438-9624.

Please note: Woodcarvers is cancelled on **May 16..** See you at the Health Fair!

WELCOME NEW MEMBERS

Cynthia Baker
Julie Bibler
Lisa Clark
Lorraine Locke
James & Jill Myers
Jim Pickering
Joyce Rutter

Sheryl Schall
Jeanette Sharp
Mary Ellen Tancred
Robert Walters



As of April 10, 2025

IN MEMORY

Bill Ginnery
Ron Wilson



Key Beth Warthman
REALTOR
740.974.8064
Beth Warthman helps you move in the right direction
539 E. Main St
Lancaster, OH 43130
ewarthman@gmail.com
bethwarthmansells.com



SUPPORT OUR ADVERTISERS!

FAIRHOPE
HOSPICE & PALLIATIVE CARE
HOME OF THE PICKERING HOUSE
740-654-7077
800-994-7077
fairhopehospice.org
f t i n





Live Like Ohio Royalty!

KINGSBURY
SENIOR LIVING

Coming Soon!

INDEPENDENT LIVING • ASSISTED LIVING • MEMORY CARE

1572 Timbertop St.
Lancaster, OH 43130
(740) 785-7903
LiveKingsbury.com





BILLIARDS CLUB

The billiard tables are available to all Olivedale Senior members during Olivedale hours.

BINGO - THURSDAY 1:00P - \$1.50

Enjoy a variety of styles of bingo.

BRIDGE - TUESDAY

If you would like to join us at the bridge table on Tuesdays or if you need a refresher contact Marty at 740-777-7080 for details.

CARDS/GAMES - TUESDAY & THURSDAY 1:00P

Card tables will be available for any game of choice.

DOMINOS - TUESDAY 1:00P

AMERICAN & CHINESE MAHJONGG - THURSDAY 1:00P (ALL SKILL LEVELS WELCOME)

The 2025 card from the National Mah Jongg League is in play! Come join us to learn the new card. We meet every Thursday at 1:00p. Prefer the Chinese version? No problem. We have folks

who play that as well. For more information, contact Cathy at 740-652-0206.

PINOCHLE - TUESDAY & THURSDAY 1:00P

We are looking for players to join our Pinochle card group. If interested, please call the office at 740-687-6655.

PING PONG - TUESDAY & THURSDAY 9:00A

All experience levels welcome.

PROGRESSIVE EUCHRE - TUESDAY & WEDNESDAY AT 1:00P - \$1.50


No partner needed.

RUMMIKUB - MONDAY 1:00P

A tile-based game for 2 - 4 players, combining elements of the card game rummy and mahjong.

Games are free to all members unless noted.





Medicare Questions?
Let us help find the right plan for YOU!

- Medicare Advantage Plans
- Medicare Supplements
- Medicare Drug Plans
- Final Expense Insurance

Jeff Richardson
740-404-2631

Lynn Richardson
740-405-6631

Your local, licensed Medicare Specialists
www.BothHandsFG.com

BOTH HANDS FINANCIAL GROUP



Halteman-Fett-Dyer
FUNERAL HOME & MEMORIALS
"Serving All Faiths"

436 NORTH BROAD STREET
LANCASTER, OH 43130

740-653-302 | A.J. DYER, MANAGER



Trusted In-Home Care

Live life your way! From a few hours to 24/7 care, we're there when and where you need us.

Personal Care, Housekeeping, Companionship and More!

740-689-9410
homehelpershomecare.com/lancaster

Each office is independently owned & operated

LET'S GROW YOUR BUSINESS
Advertise in our Newsletter!

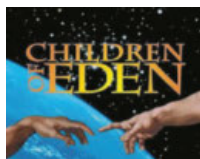
CONTACT ME
Jayne Pandy

jpandy@lpicommunities.com

(800) 477-4574 x6401

Day Trips**Sign Up Today! Olivedale Day Trips are Non-Refundable.****LaComedia ~
Springboro, OH**

Based on the Biblical book of Genesis, Children of Eden is a portrayal of creation and the flood that examines the complex love between parents and children. Travel to LaComedia on **Friday, May 9. Departing at 8:15a** and **returning** at approximately **5:30p**.



\$86.00 includes travel, dinner and show (not gratuity).

**Valley Gem
Sternwheeler ~
Marietta, OH**

Travel with us to Marietta, on **Wednesday, June 11** for a relaxing cruise down the Ohio & Muskingum Rivers. We will be enjoying the Narrated Sightseeing Lunch Tour. The Valley Gem offers you



the opportunity to sit back, relax, close your eyes and feel the wind on your face and hear the rush of the water. It's an experience that is difficult to duplicate. A sack lunch will include your choice of sub sandwich, salad, chips, cookie and beverage. **\$58.00** includes travel, cruise and sack lunch. Departing at **9:00a** and returning approximately at **3:00p**.

Vacation Trips

See the Olivedale office for vacation brochures. For reservations or questions please contact Sally Sutter at 740-407-2157 or mermaidtravel@gmail.com

CANADIAN ROCKIES & GLACIER NAT'L. PARK— Departure meeting 7/9/2025 2p

Includes: Lake Louise - Banf - Head-Smashed-In Buffalo Jump - Going to the Sun Highway - Icefields Parkway & much more!

**7/16/25—7/23/25
\$4475/person**

CAPE COD & MARTHA'S VINEYARD—.....9/7/25-9/13/25

Highlights: JFK Museum, guided tours of the "Outer Cape" and historic seaside Towns of Hyannis and Sandwich, escorted visit to Martha's Vineyard and a stop at Foxwoods Casino and Resort!

\$1009/person

CLASSIC GREECE—.....11/9/25—11/19/25

Explore the wonders of Athens, Delphi, Olympia and beyond!

\$3899/person

BILTMORE ESTATE & ASHEVILLE, NC—.....11/17/25—11/20/25

View the Blue Ridge Mountains, Grand Victorian architecture, The Blue Ridge Parkway Visitor and One of the Biltmore's many gardens.

\$717/person

COMING SOON!**SWISS ALPS VILLAGES & TRAINS—Presentation meeting 7/9/2025 3p**

Come Dance with Us!

(Unless Otherwise Noted) OPEN TO THE PUBLIC (MUST BE 18 OR OLDER).
ADMISSION **\$5**. NO Carry-In Refreshments - Dinner Menu, Refreshments
and Drinks Available for Purchase. Doors Open 6:00p ~ Dance 7:00p—
10:00p. Change is limited. Please pay with smaller currency.
NO RESERVED TABLES. Tables are first come first serve.

**SATURDAY,
MAY 3RD**
Willow Creek
Country, Rock, 50's
Bluegrass, Gospel & Comedy

SATURDAY, MAY 17TH
Dj Todd
Let's Dance!
Requests Welcome



The Blue Jeans Band
Saturday, May 31st
Classic Rock & Country
Olivedale Debut!

BOWLING AWARDS BANQUET



Olivedale Bowling
Awards Banquet will be held
on **Wednesday, May 7** at
5:00p at Olivedale. Sign up
for summer senior league
will be on Thursday, April 24
at 1:00p at Tiki. Summer
bowling starts on Thursday,
May 8 at 12:50p.

APR QUICKCROSS ANSWERS:

S	A	L	T
E	R	I	E
L	A	K	E
A	L	E	S

NEVER MISS OUR NEWSLETTER!

SUBSCRIBE

Have our newsletter
emailed to you.



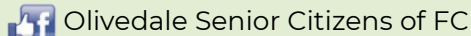
VISIT **WWW.MYCOMMUNITYONLINE.COM**

Olivedale Senior Citizens of Fairfield County

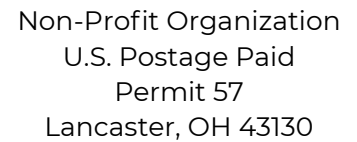
740-687-6655

email: staff@olivedale.com

www.olivedale.com



Business Office Hrs: 8:00a-5:00p M-TH
8:00a-4:30p F



A to D - Mar 31 E to K - Jun 30

L to R - Sep 30 S to Z - Dec 31

QuickCross™

around →

NCAA Bruins

Fraud

Grind

→ the

Reverberate

King or Page

Domesticate

Eating



Dancing



Socializing



Arts & Crafts



Making Friends

Learning



Exercising

